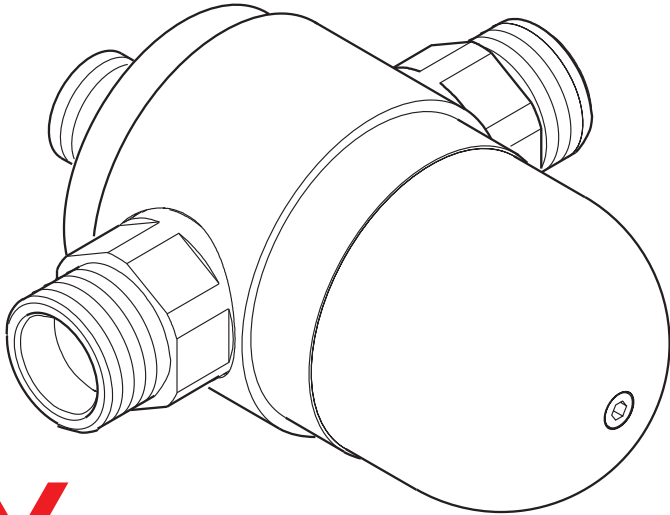




215 SERIES - AUSTRALIAN



WaterMark

AS4032.1 LICWMKA1892
SAI Global

**NSW Health approve the Rada 215 series
TMV for use in healthcare buildings.**

PRODUCT MANUAL

IMPORTANT

INSTALLER: This Manual is the property of the customer and must be retained with the product for maintenance and operational purposes.

CONTENTS

Safety : Warnings	3
Advice.....	3
Introduction	4
Healthcare Installations	4
Patents	4
Specifications	5
Dimensions.....	8
Installation	9
General.....	9
Water Supply Authorities Conditions	9
Outlet Position/Reversed Inlets	11
Rada 215 bk - wall recess	13
Rada 215 bk - panels	15
Rada 215 dk and 215 oemk	17
Commissioning	18
Operation	20
Fault Diagnosis.....	21
Maintenance.....	22
General.....	22
Planned Maintenance Programmes (preventative/precautionary maintenance).....	22
Recommended Content of Maintenance Log.....	24
In-Service Test Procedure	25
Thermostatic Cartridge.....	28
Checkvalve Cartridges	30
Inlet Strainers	31
Elbow/Body Seals	31
Spare Parts	32
Rada 215 series: Strainer and Service Packs component matrix	35
Customer Care.....	Back Page

SAFETY : WARNINGS

The function of this thermostatic mixing valve is to deliver water consistently at a safe temperature. This requires that:

1. It is installed, commissioned, operated and maintained in accordance with the recommendations given in this manual.
2. Periodic attention is given, as necessary, to maintain the product in good functional order. Recommended guidelines are given in section: **'Maintenance'**.
3. Continued use of this product in conditions outside the specification limits given in this manual can present potential risk to users.

ADVICE

The use of the word **'failsafe'** to describe the function of a thermostatic mixing valve is both incorrect and misleading. In keeping with every other mechanism it cannot be considered as being functionally infallible.

Provided that the thermostatic mixing valve is installed, commissioned, operated within the specification limits and maintained according to this manual, the risk of malfunction, if not eliminated, is considerably reduced.

Malfunction of thermostatic mixing valves is almost always progressive in nature and will be detected by the use of proper temperature checking and maintenance routines.

Certain types of system can result in the thermostatic mixing valve having excessive 'dead-legs' of pipework. Others allow an auxiliary cold water supply to be added to the mixed water from the mixing valve. Such systems can disguise the onset of thermostatic mixing valve malfunction.

Ultimately, the user or attendant must exercise due diligence to make sure that the delivery of warm water is at a stable, safe temperature. This is particularly important in such healthcare procedures as supervised bathing of patients unable to respond immediately to unsafe temperatures.

If you experience any difficulty with the installation or operation of your new Mixing Valve, please refer to **"Fault Diagnosis"**, before contacting Thornthwaite Technologies Pty Ltd. Our contact details can be found on the back cover of this guide.

INTRODUCTION

Rada thermostatic mixing valves are specified to meet the highest standards of safety, comfort and economy as demanded by todays users. All Rada products are designed, manufactured and supported in accordance with accredited BS EN ISO 9001:2000 Quality Systems.

A range of DN15/DN20 thermostatic mixing valves to suit a wide diversity of applications and installation formats.

Incorporates a unique sealed-for-life thermostatic cartridge utilising proven durability high-technology materials for extended service-free reliability. This cartridge employs a state of the art thermostatic temperature sensor to provide water at safe, accurate temperatures for ablutionary or process requirements.

The mixing valve inlets incorporate strainers and checkvalves, housed within readily accessible cartridges for easy maintenance.

The products are supplied with the temperature control locked. Once the outlet temperature has been set, it cannot be adjusted without removing the locking cap and temperature hub.

An optional adjustable temperature knob is available as an accessory (1624.068) which will allow user adjustable temperature control.

Healthcare Installations

The relevant authorities approve the following Rada thermostatic mixing valves for use in healthcare buildings:

Rada 215 dk

Rada 215 bk

Rada 215 oemk

Patents

Patents:	GB: 2 291 693, 2 340 210, 2 421 297, 2 392 225 USA: 7 240 850 Euro: 1 672 257 DE, FR, GB, IT, NL, SE
Patent Applications:	Euro: 03254070.0 USA: 2006-0124758-A1, 2007-0221740-A1

SPECIFICATIONS

Normal Operating Conditions are considered as:

- inlet dynamic pressures nominally balanced to within 10% of each other during flow.
- a differential of approximately 30°-50°C between the hot and cold inlet temperatures, and with differentials of 15-35°C between the blend setting and either supply.
- installation and usage environment not subject to extremes of temperature, unauthorised tampering or wilful abuse.

Other Applications

For information on other specific applications or suitability, refer to Thornthwaite Technologies Pty Ltd or Kohler Mira Ltd.

Disinfection

In applications where system chemical disinfection is practised, chlorine can be used (calculated chlorine concentration of 50 mg/l (ppm) maximum in water, per one hour dwell time, at service interval frequency). Such procedures must be conducted strictly in accordance with the information supplied with the disinfectant and with all relevant Guidelines/Approved Codes of Practice. If in any doubt as to the suitability of chemical solutions, refer to Thornthwaite Technologies Pty Ltd or Kohler Mira Ltd.

Operating Parameters - Pressures/Flow Rates

For optimum performance, dynamic supply pressures should be nominally equal.

Recommended Minimum Flow Rate: 2.5 l/min at mid-blend with equal dynamic supply pressures.

Recommended Maximum Flow Rate: 50 l/min at mid-blend (which equates to maximum pressure loss of 425 kPa (4.25 bar).

Maximum Pressure Loss Ratio*: should not exceed 10:1, in favour of either supply, during flow.

Recommended Minimum Dynamic Supply Pressure: 15 kPa (0.15 bar).

Recommended Maximum Dynamic Supply Pressure†: 500 kPa (5 bar).

Maximum Static Supply Pressure†: 1000 kPa (10 bar).

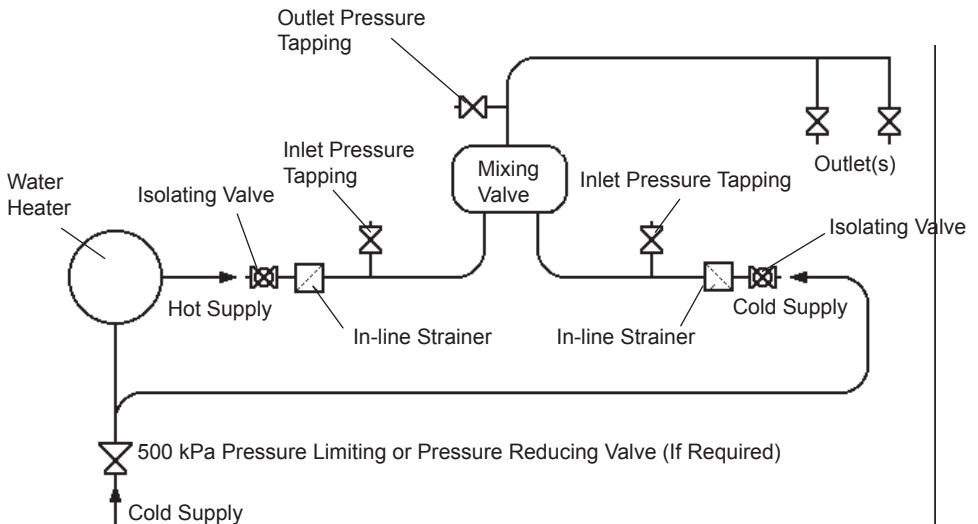
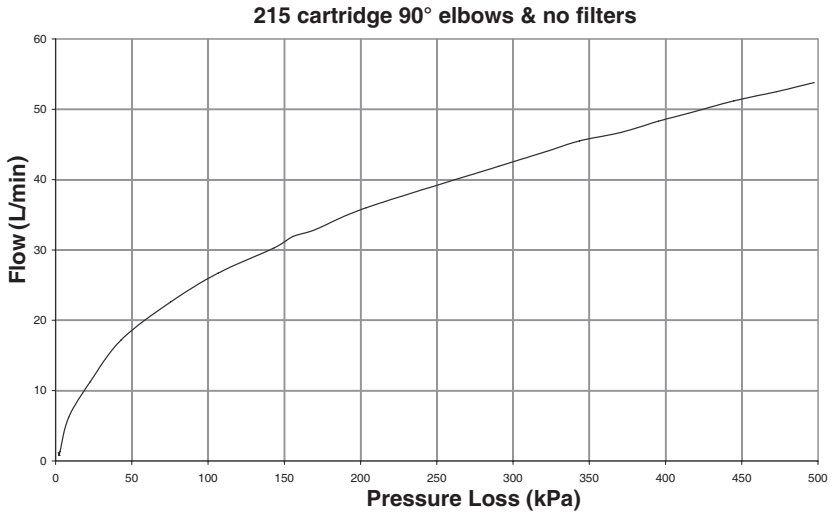
Recommended maximum flow velocity in pipelines is 2 metres/second.

† If either of these values is likely to be exceeded then a drop tight pressure reducing valve must be fitted.

* Pressure Loss Ratio is determined by subtracting the resistance to flow of the outlet pipework and outlet fittings (generally known as "back pressure", and measured at the outlet of the Mixing Valve) from the dynamic pressures of the hot and cold water at each inlet of the Mixing Valve. This is at its extreme when the Mixing Valve is being used at its lowest flow-rate and when the maximum inequality occurs in the pressure of the hot and cold water supplies.

Hydraulic Restriction: Flow Rate/Pressure Loss Graph

(mixing valve only, equal dynamic supply pressures and mid-blend temperature, rising or falling pressure loss)



Installation schematic showing additional installation features (if required)

Refer also to page 108, Fig 4, "HOSPLAN Code of Practice for Warm Water Ablution Systems Incorporating Thermostatic Mixing Valves", which is published by the NSW Health.

Operating Parameters - Temperatures

Optimum performance is obtained when the temperature differential between the hot supply temperature and the blend temperature is 20°C or more, and when the temperature differential between the cold supply temperature and the blend temperature is 20°C or more.

Blend Temperature Range: between ambient cold and approximately 60°C, according to hot water supply temperature.

Thermostatic Control Range: approximately 25° - 60°C.

Optimum Thermostatic Control Range: 35° - 45°C.

Recommended Minimum Cold Water Supply Temperature: 5°C.

Recommended maximum Cold Water Supply Temperature: Mixed Water Temperature less 15°C.

Both the mixing valve and the water supplies must be protected from freezing. This may require a combination of adequate pipe insulation and provision of background heating. If there is any doubt that freezing will not be prevented, then the water supplies and the mixing valve should be drained.

Recommended Maximum Hot Water Supply Temperature: 85°C.

Recommended Minimum Hot Water Supply Temperature: Mixed Water Temperature plus 15°C.

Flow Control

Rada 215 series mixing valves do not have integral flow control; appropriate provision must be made for this in the outlet pipework.

This can be in the form of basin/bath tap, stopcock, mechanical timed-flow controller or solenoid. The device chosen must be non-concussive in operation.

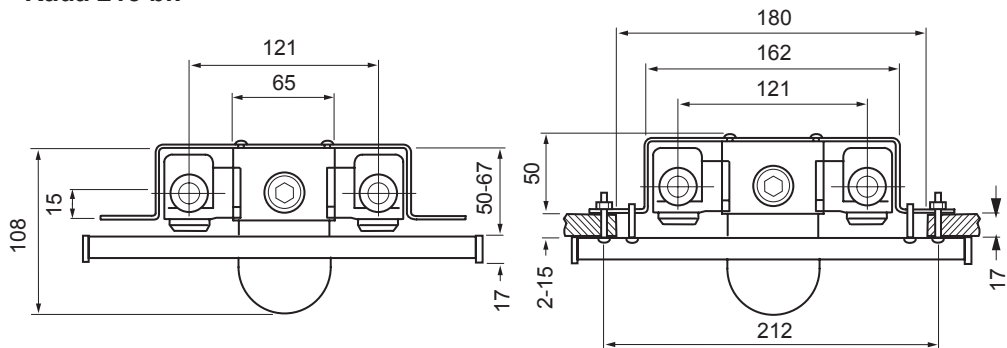
Outlet: top (can be altered to bottom as required, refer to section: '**Installation**').

All models can operate in any plane, and may be inverted if necessary for pipework layout convenience, provided hot and cold pipework is connected to the appropriate inlets (**hot = red, cold = blue**).

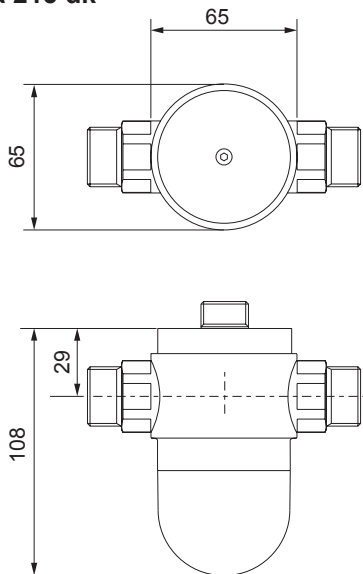
Note! Should the supplies be reversed then the mixing valve will not be able to control temperature. This can be corrected by reversing the position of the thermostatic cartridge within the mixing valve body, refer to section: '**Installation**'.

Dimensions

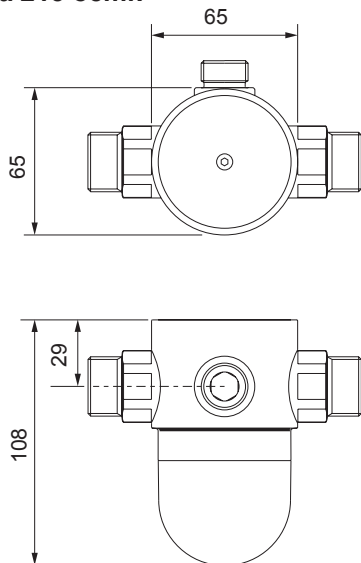
Rada 215 bk



Rada 215 dk



Rada 215 oemk



All dimensions in mm

INSTALLATION

General

These Rada 215 thermostatic mixing valves must be installed, commissioned and serviced by designated, qualified and competent personnel in accordance with the requirements of the NSW Health Policy Directive PD2005_344 (a copy of which can be obtained from: www.health.nsw.gov.au) including the requirements of the "HOSPLAN Code of Practice for Thermostatic Mixing Valves", and carried out in accordance with the instructions contained in this manual, the requirements of the local Water Supply Authority, as well as the regulations under the Nursing Homes Act and the Private Hospitals and Day Procedure Centres Act.

Water Supply Authorities Conditions

For special conditions regarding installation, refer to the following Australian Standards and NSW Code of Practice:

- New South Wales Code of Practice - Plumbing and Drainage published by CUPDR
 - Inlet isolating valves must be installed, refer to "NSW Code of Practice - Plumbing and Drainage"
 - AS3500.4
 - AS4032.1
 - AS4032.3
1. Before commencing, make sure that the installation conditions comply with the information given in section: **'Specifications'**.
 2. Care must be taken during installation to prevent any risk of injury or damage.
 3. Installations must comply with all Local/National Water Supply Authority Regulations/Bye-Laws and Building and Plumbing Regulations.
 4. The mixing valve should be positioned for easy access during use and maintenance. All routine maintenance procedures can be conducted with the mixing valve body in place (except for strainer and checkvalve access on 215 dk and 215 oemk). For all models, allow a minimum 80 mm clearance in front of the temperature control to enable removal of the thermostatic cartridge during maintenance.
 5. The use of supply-line or zone strainers will reduce the need to remove debris at each mixing valve point. The recommended maximum mesh aperture dimension for such strainers is 0.5 mm, unless the integral strainer screens have been removed when the maximum mesh aperture should be 0.25 mm (refer to Installation Procedure for the 215 dk and 215 oemk).
 6. Pipework must be rigidly supported.

7. Inlet and outlet pressure tapings which allow measurement of the inlet and outlet pressures at the mixing valve under running conditions are required in healthcare applications.
8. Pipework dead-legs should be kept to a minimum.
9. Supply pipework layout should be arranged to minimise the effect of other outlet usage upon the dynamic pressures at the mixing valve inlets.
10. Inlet and outlet threaded joint connections should be made with PTFE tape or liquid sealant. Do not use oil-based, non-setting jointing compounds.
11. To eliminate pipe debris it is essential that supply pipes are thoroughly flushed before connection to the mixing valve.

Outlet Position/Reversed Inlets

Rada 215 dk and 215 oemk models are readily adaptable for rising or falling pipework; flat-faced union connectors will allow the valve body to accept a variety of pipework configurations, and to be reversed or inverted as appropriate.

All Rada 215 series mixing valves, except 215 dk, are supplied with inlet connections configured **hot - left, cold - right, and top outlet** as standard. It is essential that inlet supplies correspond with the red and blue markings on the thermostatic cartridge. Should the existing hot and cold pipework make this configuration inconvenient, or a bottom outlet position be required, the valve inlets or outlet can be reversed, as detailed below. If both the outlet and inlet positions require reversing, it is easier to simply rotate the complete mixing valve by 1/2 turn, and then reposition the locking cap.

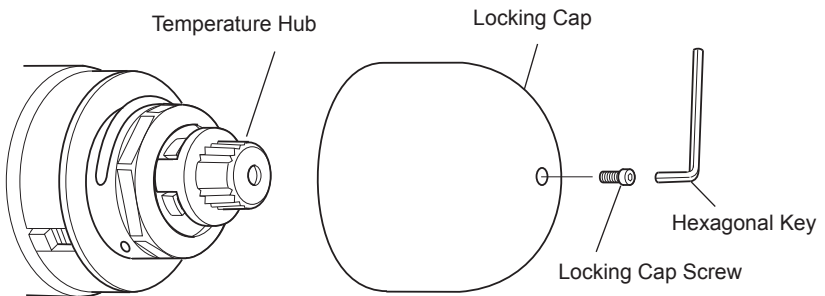
Outlet Reversal should be done **prior** to installation of the mixing valve body. Rotate the body 1/2 turn so that the outlet is in the opposite direction, then follow the procedure for reversing the cartridge .

Reversed connections can be altered before or after the mixing valve has been installed. Follow procedure for reversing the cartridge.

Reversing the Cartridge

1. If the thermostatic mixer has already been installed, isolate the water supplies, and open an outlet fitting to release pressure and to drain any residual water.
2. Unscrew the locking cap screw using a 3 mm hexagonal key (supplied) and remove the locking cap.

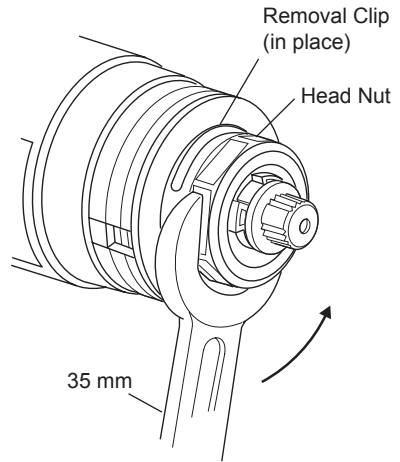
Note! Do not remove the temperature hub.



3. With the removal clip still in place, unscrew the head nut fully using a 35 mm A/F wrench and pull the thermostatic cartridge free from the mixing valve body.

Caution! Some residual water may be released.

4. Rotate the thermostatic cartridge 1/2 turn, which reverses the position of the cartridge hot and cold inlets.
5. Make sure that the cartridge inlet seals are greased and carefully push the thermostatic cartridge back into the mixing valve body, checking that the 2 cartridge inlet seals remain in place, and locate the cartridge lugs into the body slots.



Note! On older models to assist with this process, orientate the cartridge so that the inlet seals are not directly aligned with the inlet ports, and carefully rotate the cartridge whilst pushing into the valve body until the cartridge lugs can be located in the body slots.

Note! The red markings on the cartridge will now not correspond with the body markings, so to avoid future confusion remove the red and blue stickers from the valve body.

6. Carefully align and then tighten the head nut; **do not overtighten** (max torque 2.5 N/m - 1.85 lbf ft).
7. Complete the installation (if appropriate).
8. If the mixing valve body has already been installed, restore the hot and cold supplies and check for any leaks.
9. Align and refit the body shroud and locking cap so that the markings will be visible to the user (built-in models: first refit the concealing plate).
10. The maximum temperature may now need resetting; check, and if necessary refer to section: '**Commissioning**'.

Rada 215 bk - wall recess

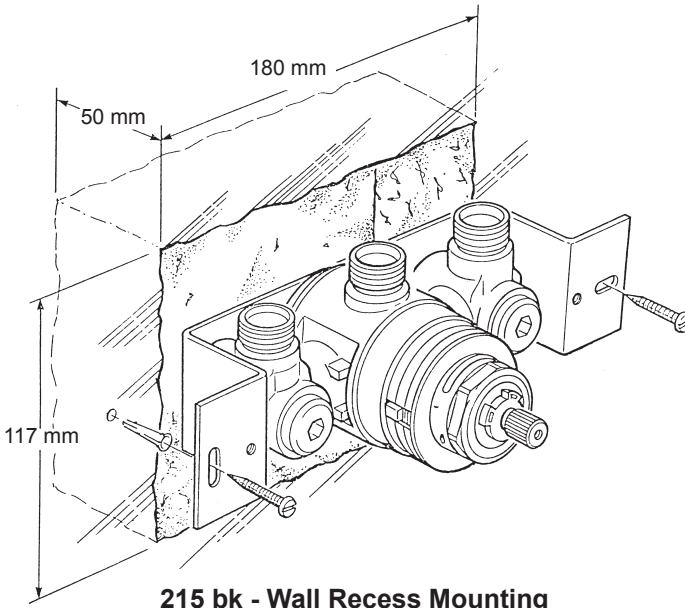
The Rada 215 bk is suitable for building-in to solid, dry-lined, stud partition or dry partition wall structures.

To allow for connection of pipework, the recess in the wall (unfinished) should be approximately 180 mm x 117 mm x 50 mm (refer to illustration).

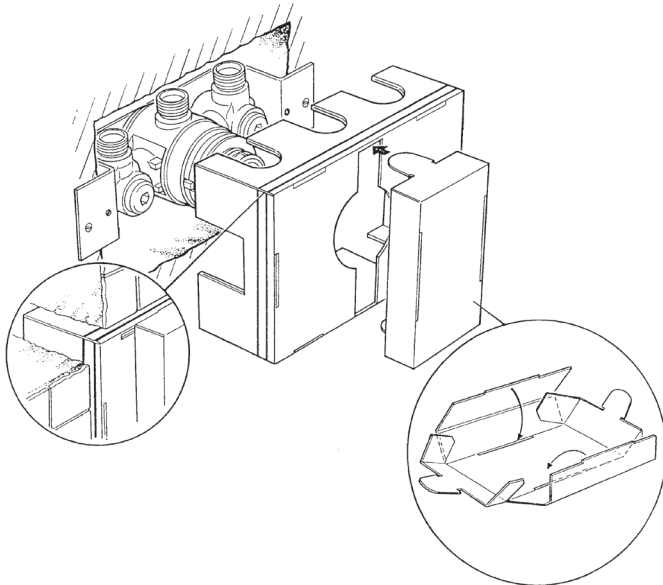
The depth of concealment is critical, the minimum depth to accept the mounting bracket is 50 mm, with another 15 mm maximum on top of this for finishing coat thickness of plaster and tiles or other material. This last dimension determines how much of the locking knob will be visible through the concealing plate.

A building-in shroud is supplied, which protects the mixing valve during plastering/finishing and provides a reference for the building-in depth.

1. This mixing valve is supplied with outlet to top, should the installation require outlet to bottom, then refer to section: **'Outlet Position/Reversed Inlets'**.
2. When unpacked, the inlet elbows are positioned to accept falling supplies. Should the installation require rising supplies, then the elbows will need adjusting; loosen each elbow grubscrew using a 2.5 mm hexagonal key (supplied), pull the elbow away from the mixing valve body and **refit on opposite inlet port** so that the checkvalve cartridges remain facing forwards, and re-tighten the grubscrew.
3. Fit the mounting bracket to the mixing valve base using the 2 Screws supplied, and mount the mixing valve into the recess (refer to illustration), using wall screws/plugs (supplied) if appropriate. The mounting bracket must be horizontal.
4. **Important! Flush through the hot and cold supplies thoroughly before connection to mixing valve.**



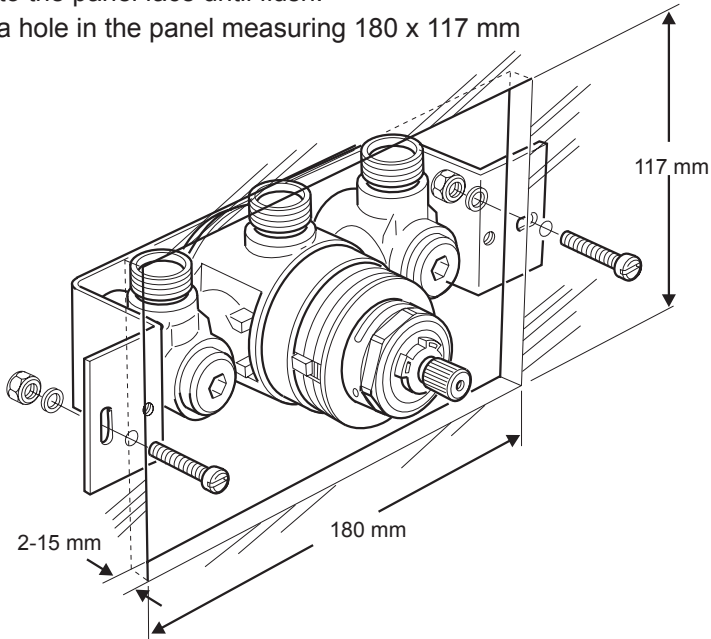
5. Connect the inlet and outlet pipework, checking that the hot and cold supplies have been piped to the correct inlets, and check all connections are watertight.
6. Assemble the building-in shroud (refer to illustration), and fit over the mixing valve in the recess. Plaster and tile, or finish as appropriate, up to edge of shroud. Final wall surface must fall between the 2 lines on the building-in shroud (refer to illustration).
7. When the wall surface is finished, remove the building-in shroud and locking knob.



Rada 215 bk - panels

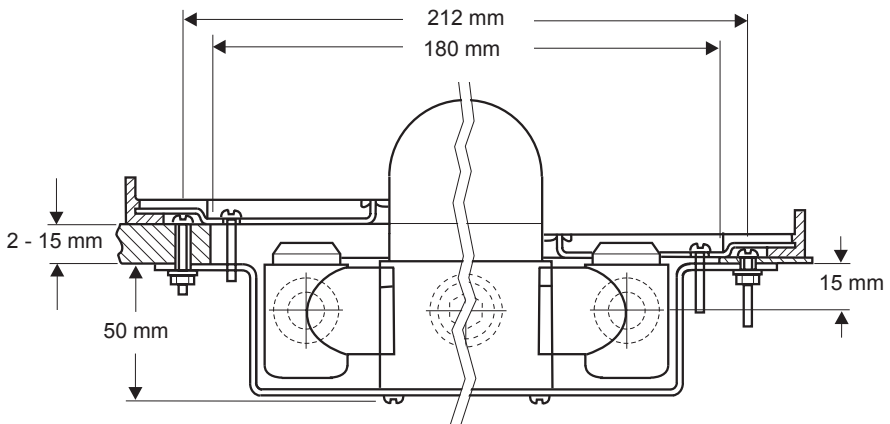
Note! The mounting bracket can also be mounted to the front face of thicker panels which will receive a further finishing layer of 2-17 mm thickness. If this further finishing layer is not to be provided, the ends of the mounting bracket must be recessed 2 mm depth) into the panel face until flush.

1. Cut a hole in the panel measuring 180 x 117 mm

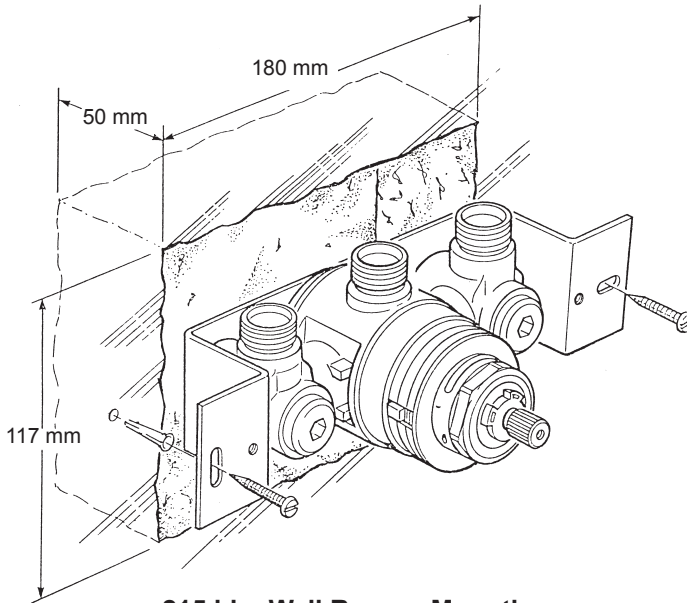


Mounting 215 bk to Panel (2-15 mm)

2. Drill 2 fixing holes at centres of 212 mm (refer to illustrations). The fixing hole dimensions must be suitable for the selected securing method, appropriate for the particular panel material.



3. Follow instructions **1 and 2** in section: '**Rada 215 bk - wall recess**'.
Note! The inlets accept rising or falling supplies, on thicker panels this may require the inlet pipework to be configured with elbows or pipe bends immediately prior to the inlet connections.
4. Fit the mounting bracket to the mixing valve base using 2 screws (supplied). If access is available it may be preferable to make the initial valve/pipework connections prior to securing the mixing valve to the panel.
5. Mount the mixing valve securely into the recess (refer to illustration), using drilled 212 mm hole centres.



6. **Important! Flush through the hot and cold supplies thoroughly before connection to mixing valve.**
7. Connect inlet and outlet pipework, checking that the hot and cold supplies have been piped to the correct inlets, and check all connections are watertight.
8. Plaster and tile, or finish as appropriate, up to the panel hole perimeter only, and to a maximum thickness of 15 mm over the front face of the mounting bracket. Protect the mixing valve and pipe connections during this process.

Rada 215 dk and 215 oemk

1. Inlets are G3/4 B/DN20 compression, outlets are G1/2 B/DN15 compression. Flat faced union connections are recommended, so that the mixing valve body can be readily removed from its pipework for maintenance purposes.
If compression or other connections are used which do not allow ready removal of the mixing valve body then the integral strainer screens should be removed and supply-line strainers installed with a maximum mesh aperture of 0.25 mm.
2. Run inlet and outlet pipework to the mixing valve, checking that hot and cold supplies have been piped to the correct inlets.
3. **Important! Flush through the hot and cold supplies thoroughly before connection to mixing valve.**
4. Connect the inlet and outlet pipework, checking that the hot and cold supplies have been piped to the correct inlets, and check all connections are watertight. Refer to section: '**Commissioning**'.

COMMISSIONING

Commissioning must be carried out in accordance with these instructions, and must be conducted by designated, qualified and competent personnel.

Exercising the Thermostat

Thermostatic mixing valves with wax thermostats are inclined to lose their responsiveness if not used. Mixing valves which have been in storage, installed but not commissioned, or simply not used for some time should be exercised before setting the maximum temperature or carrying out any tests.

A simple way to provide this exercise is:

- a) Make sure that hot and cold water are available at the valve inlets;
- b) Move the temperature control rapidly from cold to hot and hot back to cold several times, pausing at each extreme.

Maximum Temperature

The maximum blend temperature obtainable by the user should be limited, to prevent accidental selection of a temperature that is too hot.

All Rada thermostatic mixing valves are fully performance tested and the maximum temperature is preset to approximately 43°C under ideal installation conditions at the factory.

Site conditions and personal preference may dictate that the maximum temperature has to be reset following installation.

The mixing valves are provided with a locked cap to prevent unauthorised adjustment of the preset site temperature.

Maximum Temperature Setting

Check that an adequate supply of **hot** water is available at the hot inlet of the mixing valve.

The minimum temperature of the hot water must be at least 12°C above the desired blend, however during resetting this should be close to the typical storage maximum to offset the possibility of any blend shift due to fluctuating supply temperatures.

Check that both inlet isolating valves are fully open.

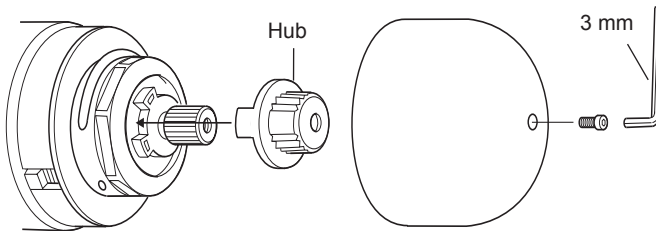
Temperatures should always be recorded using a thermometer with proven accuracy.

Resetting

1. Remove the locking screw using a 3 mm hexagonal key (supplied), and pull off the locking cap.
2. Pull off the temperature hub.
3. Rotate the spindle until the required maximum blend temperature is obtained at the discharge point (**clockwise = decrease temperature**).

When resistance is felt do not use force to turn any further, as this can damage the internal parts.

4. Once the desired maximum blend temperature is achieved, refit the hub without disturbing the spindle, positioning it so that the lug is between the stops on cartridge face (refer to illustration), so preventing any rotation. Check that the blend temperature has not altered.
5. Fit the locking cap, engaging the cap guides into the body slots, and secure with the locking screw.



Locked Temperature Setting

Commissioning Checks

The following checks should be carried out following a cartridge replacement and whenever a mixing valve is introduced to, or returned to service.

(Temperatures should always be recorded with a thermometer with proven accuracy).

1. Check inlet pipework temperatures for correct function of checkvalves i.e. that hot water does not cross into cold supply and vice versa.
2. Check that the supply pressures are within the range of operating pressures for the valve.
3. All pipework and mixing valve connections are tight.
4. Adjust the temperature of the mixed water in accordance with the instructions (refer to **Maximum Temperature Setting**).

5. Operate the outlet flow control and check:
 - a) Flow rate is sufficient for purpose.
 - b) Temperature(s) obtainable are acceptable.
6. It is advisable to establish a performance check at this time, which should be noted for future reference as part of a Planned Maintenance Programme.
7. Carry out the following check:
 - a) the supply temperatures are within the range permitted for the valve and by guidance information on the prevention of legionella etc.
8. Carry out the following sequence:
 - a) record the temperature and pressure of the hot and cold water supplies.
 - b) record the temperature and flow rate of the mixed water at the largest draw-off flow rate.
 - c) record the temperature and flow rate of the mixed water at about the smallest draw-off flow rate.
 - d) isolate the cold water supply to the mixing valve and monitor the mixed water temperature.
 - e) isolate the hot water supply to the mixing valve and monitor the mixed water temperature.
 - f) record the maximum temperature achieved as a result of (d) and the final temperature.
 - g) record the date, equipment, thermometer etc. used for the measurements.

OPERATION

For models with locked temperature control, no user adjustment is intended.

An optional adjustable temperature knob is available as an accessory (1624.068) which will allow user adjustable temperature control. Anti-clockwise rotation increases the temperature to the preset maximum. Clockwise rotation reduces the temperature to full cold.

Control of flow is via separate outlet valve(s), refer to section: '**Specifications**'.

FAULT DIAGNOSIS

Symptom	Cause / Rectification
1. Only hot or cold water from outlet.	<ul style="list-style-type: none"> a. Inlet supplies reversed (i.e. hot supply to cold inlet). Check. b. No hot water reaching Mixing Valve. Check. c. Check Strainers and inlet/outlet fittings for blockage. d. Refer to symptom 5 below. e. Supply conditions continuously outside operating parameters, refer to section: 'Specifications' and 2e below.
2. Fluctuating or reduced flow rate.	<p>Normal function of Mixing Valve when operating conditions are unsatisfactory.</p> <ul style="list-style-type: none"> a. Check Strainers and inlet/outlet fittings for flow restriction. b. Assure that minimum flow rate is sufficient for supply conditions. c. Make sure that dynamic inlet pressures are nominally balanced. d. Make sure that inlet temperature differentials are sufficient. e. Check thermostatic performance; renew Thermostatic Cartridge if necessary.
3. No flow from the Mixing Valve outlet.	<ul style="list-style-type: none"> a. Check Strainers and inlet/outlet fittings for blockage. b. Hot or cold supply failure; Thermostat holding correct shutdown function: rectify, and return to 2e above.
4. Blend temperature drift.	<p>Indicates operating conditions changed.</p> <ul style="list-style-type: none"> a. Refer to symptom 2 above. b. Hot supply temperature fluctuation. c. Supply pressure fluctuation.
5. Hot water in cold supply or vice versa.	<p>Indicates Checkvalves require maintenance, refer to section: 'Maintenance'.</p>
6. Maximum blend temperature setting too hot or too cool.	<ul style="list-style-type: none"> a. Indicates incorrect maximum temperature setting, refer to section: 'Commissioning'. b. As symptom 4 above. c. As symptom 5 above.
7. Water leaking from the Mixing Valve body.	<p>Seal(s) worn or damaged.</p> <ul style="list-style-type: none"> a. Obtain Service Pack (408 92), and renew all seals. b. If leak is from around the Temperature Spindle, renew the Thermostatic Cartridge.

MAINTENANCE

General

Maintenance of this product must be carried out in accordance with these instructions, and must be conducted by designated, qualified and competent personnel.

Rada products are precision-engineered and should give continued superior and safe performance, provided:

- 1. They are installed, commissioned, operated and maintained in accordance with the recommendations stated in this Product Manual.**
- 2. Periodic attention is given as necessary to maintain the product and its associated installation components in good functional order. Guidelines are given below.**

All the mixing valves in this series have all functional parts contained within service-free cartridges, so any maintenance requirement is reduced to temperature, performance and functional checks and inspection, with cartridge renewal when necessary. In larger installations with a number of mixing valves, it is good policy to maintain a small stock of spare cartridges so that no mixing valve or facility need be out of commission for more than the time it takes to exchange the cartridge, and also, eventually, a rolling programme of cartridge renewal can be undertaken as part of a planned maintenance procedure.

Planned Maintenance Programmes (preventative/precautionary maintenance)

1. It is recommended that a routine of preventative maintenance be employed which is based upon assessment of the risks to the user. The following practices are intended to support such a routine:
 - In-service tests
 - Regular temperature checking in between In-service tests
 - Maintenance of a log of in-service tests and temperature checks together with details of cartridge replacements and any other service work.
2. Thermostatic mixing valves only operate correctly when all components have been serviced and have been tested for correct performance. If any component is faulty, including the thermostat, the mixing valve will not operate correctly and could allow full hot water to pass through the mixing valve.
3. As with all other thermostatic mixing valves, the critical sensing element in the Rada 215 together with other "critical components" will exhibit wear over a period of time and usage. All of these parts are contained within the thermostatic cartridge.

4. Cartridge Replacement

- **The designed minimum service life of thermostatic cartridge is five years providing the Rada 215 is operated with the recommended operating conditions and within the recommended operating parameters.**

Therefore under these normal conditions and /or parameters it is recommended that the cartridge be replaced every five years.

However when supply conditions and/or usage patterns do not conform to the recommended conditions and/or parameters the cartridge may need to be changed more frequently, "recommended operating conditions" and "recommended parameters" are defined in section: '**Specifications**'.

- Should an internal malfunction occur then this will probably require cartridge renewal The thermostatic and checkvalve cartridges contain no user-serviceable parts, and must not be dismantled. Components are precision-made, so care must be taken while servicing to avoid damage.
- The three 'O' seals located on the outside diameter of the Rada 215 cartridge are static seals. During the operation of the mixing valve these seals are not exposed to the wear and tear associated with 'dynamic' seals. In fact there is no movement within these seals during the operation of the thermostatic unit. The above mentioned inlet 'O' seals should only be replaced when the cartridge is replaced, or when the 'O' seals have been damaged through abnormal treatment. Under normal circumstances the thermostatic cartridge should not need to be removed from the mixing valve body every 12 months as it is a 'service-free' cartridge.
- Monitoring the performance of the mixing valves as per Australian Standard AS 4032.3 is also recommended. This will make sure that the cartridges (complete with seals) are replaced at suitable periods to facilitate preventative maintenance.

In-Service Tests

The principle means for determining the continued satisfactory performance of the mixing valve is the in-service test.

The in-service test procedure should be carried out at both 6 to 8 weeks and 12 to 15 weeks after commissioning the valve. The results of these tests are used to determine when, after initial commissioning, the in-service test is next repeated.

Frequency of In-Service tests

The in-service test results over the first 28 weeks after commissioning determine the ongoing frequency of testing shown in the right hand boxes of the Guide.

Whenever a thermostatic cartridge is replaced the in-service test frequency should be re-assessed as if it was a new valve.

Note! In-service tests should be carried out with a frequency which identifies a need for service work before an unsafe water temperature can result.

The general principle to be observed after the first 2 or 3 in-service tests is that intervals of future tests should be set to those which previous tests have shown can be achieved with no more than a small change in mixed water temperature. But in no case longer than 12 months.

Temperature Testing (In between In-Service Tests)

Check and record warm water temperature regularly to confirm correct operating performance of the valve. In health care applications such as hospitals, aged persons facility, nursing homes etc. such checks must be made at least every month. More regular temperature checks should be made where increased risks are perceived such as where patients are unable to immediately respond to an increase in water temperature by either shutting the water off or removing themselves from the contact with the water. Records of warm water temperature checks should be included in a log book.

Thermostatic Mixing Valve Performance Records (Log Book)

It is recommended that the user maintains a log of the in-service tests described herein, together with a record of any service work carried out and the replacement of critical components. It is also recommended that any maintenance personnel sign the user log in respect of all thermostatic mixing valves examined on each attendance at the user's premises.

Recommended Content of Maintenance Log

It is recommended that the Maintenance Log should record the following:

Details of valve, location and use, risk level and instructions

Valve make, model and unique identification number

Valve location

Date installed

Application i.e. type of discharge: bath, shower etc.

Risk assessment report number

Risk level found (e.g. vulnerability of patient)

Frequency of critical component replacement

Frequency of temperature monitoring

Responsibility for temperature monitoring

Location of temperature monitoring records

Source of spares and advice

Issue number of Product Manual

Details of in-service testing and maintenance

Initial commissioning test data (Supply pressures and temperatures, mixed water temperature, flow rate, result of cold water isolation test, date carried out, signature of maintenance person).

First in-service test due date

First in-service test data (As for initial commissioning)

Details of any remedial work carried out to valve or supply system

Second in-service test due date

Second in-service test data (As for initial commissioning)

Details of any remedial work, including part replacement, carried out to valve or supply system.

Next in-service test due date

Next in-service test data (As for initial commissioning)

Details of any remedial work, including part replacement, carried out to valve or supply system

Note! Local requirements may demand that additional information be recorded

In-Service Test Procedure

In-Service Tests should be carried out 6 to 8 weeks, and 12 to 15 weeks after commissioning the valve. The results of these tests will determine how frequently further testing is to be carried out.

Testing that is carried out, is to determine the difference between the current blend temperature and the temperature recorded previously at commissioning or at previous in-service test e.g. $43^{\circ}\text{C} - 42.5^{\circ}\text{C} = 0.5^{\circ}\text{C}$.

1. Measure and record the supply temperature.
2. Measure and record the supply pressure if possible (see Commissioning).
3. Measure and record the blend temperature with one outlet flowing at approximately lowest draw-off normal flow rate. **Compare to previously recorded temperature at that flow rate. Record difference e.g. 1°C or 0.5°C etc.**
4. Measure and record blend temperature with all outlets that are likely to be operating at the same time, flowing at normal flow rate. **Compare to previously recorded temperature at that flow rate. Record difference e.g. 1°C or 0.5°C etc.**
5. If blend water temperature has changed by more than 1°C , carry out the following tasks or if the change is less than 1°C move directly to item 6.
 - Inspect and clean/replace strainers if necessary.
 - Verify that the check valves are not allowing hot water to by-pass through the valve to the cold inlet supply and vice versa.
 - Make sure that the isolating valves are fully open.
 - Reset and record blend temperature as per commissioning instructions.

6. At this stage ensure that the supply temperatures/pressures and the flow rates during test are within the specification parameters of the mixing valve. Then record the figures.
7. Carry out thermal shut down by isolating the cold water inlet supply. The mixing valve should shut down the flow of outlet water. Measure and record the temperature of any drainage water i.e. maximum temperature immediately after shut down and final temperature of any drainage water. Normally the flow of any drainage water will stop immediately unless the dead leg from the mixing valve is too long.
8. **Is the final drainage water temperature more than 2°C above the temperature recorded at the previous in-service test. If it is, replace the thermostatic cartridge.**
9. If the thermostatic cartridge is replaced carry out the commissioning procedure.

Frequency Of In-Service Tests

Follow the procedure detailed in the "In Service Test Procedure". This procedure must be carried out at 6 to 8 weeks and 12 to 15 weeks after commissioning.

The first 2 to 3 In-Service Test results should be used as a guide, and in conjunction with a suitable risk assessment, to determine the schedule of future In-Service Tests.

Result of 6 - 8 Week Test	Result of 12 - 15 Week Test	Next In-Service Test Interval
Less than or equal to 1°C	Less than or equal to 1°C	9 - 12 Weeks
More than 1°C	Less than or equal to 1°C	9 - 12 Weeks
Less than or equal to 1°C	Less than 1°C	9 - 12 Weeks
More than 1°C	Less than 1°C	6 - 9 Weeks

Training

Maintenance personnel should also make sure that the user's staff are aware of the importance of reporting temperature variations and that when detected, these should be recorded in the log.

Maintenance Procedures

Maintenance must be carried out in accordance with these instructions, and must be conducted by designated, qualified and competent personnel.

This mixing valve series is designed for minimal maintenance under conditions of normal use.

External surfaces may be wiped clean with a soft cloth, and if necessary, a mild washing-up type detergent or soap solution can be used.

Caution! Many household and industrial cleaning products contain mild abrasives and chemical concentrates, and should not be used on polished, chromed or plastic surfaces.

When ordering spare parts, please state product type and identify part name and number (refer to section: '**Spare Parts**'). A service pack is available, containing all the seals and strainer screens that may be necessary for renewal during maintenance or servicing (part no. 408 92).

Lubricants

Important: Use silicone-only based lubricants on this product. Do not use oil-based or other lubricant types as these may cause rapid deterioration of Seals.

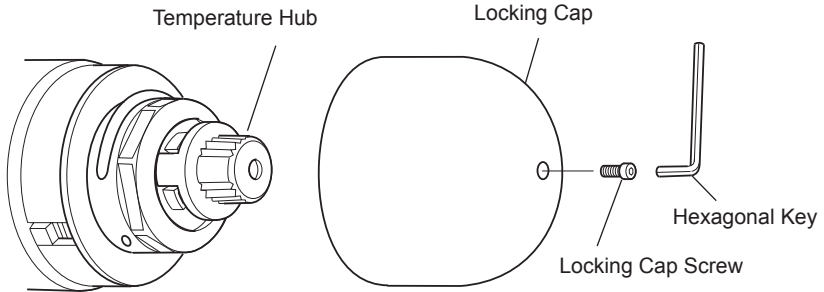
Standard silicone-only based lubricants may be used on all static seals, and threads, to assist refitting (e.g. Rocol MX22).

Thermostatic Cartridge

Removal

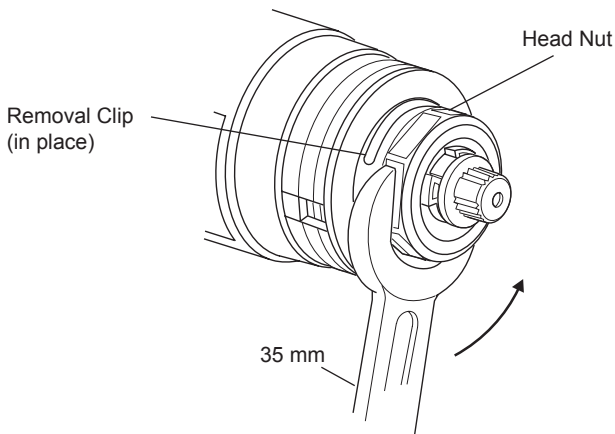
1. Isolate the supplies to the mixing valve, and open an outlet fitting to release pressure and to assist the draining of residual water.
2. Unscrew the locking cap screw using a 3 mm hexagonal key (supplied) and remove the locking cap.

Note! Do not remove the temperature hub.



3. With the removal clip still in place, unscrew the head nut fully using a 35 mm A/F wrench. Note which inlet aligns with the hot (marked H and red) lug on cartridge and pull the thermostatic cartridge free from the valve body.

Caution! Some residual water may be released.



Thermostatic Cartridge Removal

Cleaning/Renewal of Parts

- The interior surface of the mixing valve body must be clean before refitting cartridge. If scale or deposition is present clean **(without checkvalve cartridges fitted)** using a mild proprietary inhibited scale solvent, e.g. domestic kettle descaler. After descaling, rinse valve interior thoroughly in clean water before refitting cartridges.

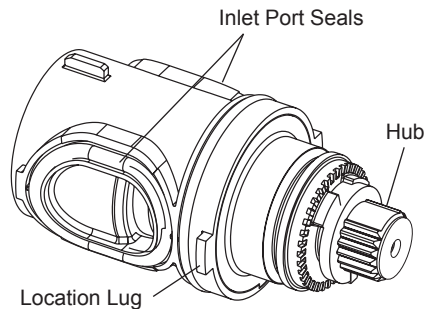
Note! The body interior must be cleaned carefully and not damaged in any way. Do not use any abrasive material.

- Cartridges may only be cleaned by flushing through under a jet of clean water to remove lodged particles.

Do not descale. Cartridges are not serviceable, and must not be dismantled.

Cartridges cannot be tested individually, service condition should be assessed as part of the performance check; refer **Commissioning Checks**.

- When renewing the thermostatic cartridge, retain the removal clip and head nut off the displaced unit and refit.
- Examine all accessible seals for signs of deformation or damage, and renew as necessary, taking care not to damage seal grooves (a service pack is available, containing all seals and strainer screens that may be necessary for renewal during maintenance or servicing, part no. 408.91/92). If the strainer screens need replacing, a strainer screen pack is available.
- Lightly coat all seals with a **silicone-only based lubricant** to assist re-assembly (see **Lubricants**).
- Identify which is the hot inlet to the mixing valve body, and align the thermostatic cartridge accordingly. Make sure that the cartridge inlet seals are greased and carefully push the thermostatic cartridge back into the mixing valve body, checking that the 2 cartridge inlet seals remain in place, and locate the cartridge lugs into the body slots.



- Note!** On older models to assist with this process, orientate the cartridge so that the inlet seals are not directly aligned with the inlet ports, and carefully rotate the cartridge whilst pushing into the valve body until the cartridge lugs can be located in the body slots.
- Carefully align and then tighten the head nut; **do not overtighten** (max. torque 2.5 N/m = 1.85 lbf. ft).
(Built-in models: refit the concealing plate).
 - Align and refit the body shroud and locking cap so that the markings will be visible to the user.
 - Restore the hot and cold supplies and check for any leaks.
 - Carry out the commissioning checks; refer to section: '**Commissioning**'.

Checkvalve Cartridges

Hot water entering the cold supply, or vice versa, indicates that immediate attention is necessary. This is carried out by removing and cleaning, or renewing as necessary, the two checkvalve cartridges.

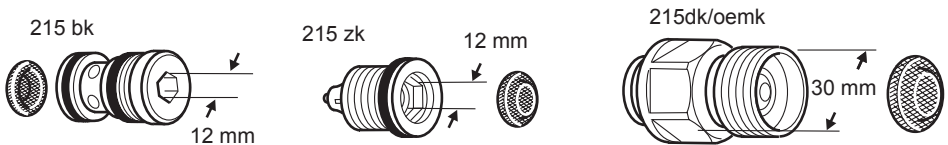
1. Isolate the supplies to the mixing valve, and open an outlet fitting to release pressure and to assist the draining of residual water.
2. Location and removal of checkvalve cartridges varies according to the mixing valve model:

215 bk; The checkvalve cartridges are located in each elbow. To remove, first remove the locking knob and carefully lever off the concealing plate by inserting a medium slotted screwdriver blade under each corner (not under white side trims). Then undo the checkvalve cartridge head hexagon using a 12 mm A/F hexagonal key and pull free.

Caution! Some residual water may be released at this point.

215 dk/oemk; The checkvalve cartridges are located at the mixing valve body inlets. To remove, first release the mixing valve body from the inlet and outlet connectors, then release the checkvalve cartridges using a 30 mm A/F wrench.

Caution! Some residual water may be released at this point.



3. The checkvalve cartridge assembly may be cleaned by removal of the inlet strainers, and flushing through under a jet of water to remove lodged particles.

The checkvalve cartridge is not a serviceable item, so any functional failure or damage will require its renewal.

Lightly wipe external seals and thread with a **silicone-only based lubricant** to assist refitting. Re-assembly into the mixing valve is a reversal of the above procedures. Do **not overtighten** when re-inserting cartridges. Restore the water supplies and check for leaks.

Inlet Strainers

Blockage of the inlet strainer screens can lead to poor flow performance and reduced temperature control. It is essential that the inlet strainer screens are cleaned or, if necessary, renewed at least annually.

A strainer pack is available for all 215 series models (408 91) containing 2 strainer screens and all the seals (plus lubricant) and nylon washers which may need to be renewed during strainer inspection (see component matrix).

1. Isolate the supplies to the mixing valve, and open an outlet fitting to release pressure and to assist the draining of residual water.
2. The strainer screens are located at the inlet of each checkvalve cartridge. To access the inlet strainer screens:
215 bk; remove the checkvalve cartridges as described in the previous section.
215 dk, 215 oemk; remove the mixing valve body from its pipework connections.
3. The strainer screens are dished outwards and are a push-fit into the housing. Remove carefully, using a sharp-pointed implement.
4. The strainer screens may be cleaned under a jet of water, or renewed.
5. Re-assembly into the mixing valve is a reversal of the above procedures. Do not overtighten when re-inserting cartridges.
6. Restore the water supplies and check for leaks.

Elbow/Body Seals

Some models have inlet/outlet adaptor, elbow and elbow adaptor seals which are static and should rarely require renewal. These seals are included in the service pack (408 92).

1. Isolate the supplies to the mixing valve, and open an outlet fitting to release pressure and to assist the draining of residual water.
2. Release inlet and outlet connections. B models: the mixing valve body will require removal from recess or panel mountings, refer to section: '**Installation Procedures**'.
3. Remove the elbows by loosening each elbow grubscrew using a 2.5 mm wrench key (supplied).
4. Remove the adaptors using a 12 mm hexagonal key.
5. Lightly coat seals with a silicone-only based lubricant to assist re-assembly.
6. When re-inserting adaptors, do not overtighten.
7. Refit and remake pipework connections, restore hot and cold supplies and check for any leaks.

SPARE PARTS

407.26	Removal Clip
407.28	Hub, Black
407.54	Locking Cap; 215 series
407.61	Body; 215 bk/oemk
407.62	Body; 215 dk
407.64	Head Nut; 215 series
407.75	Elbow Adaptor, 215 bk (2)
407.88	Mounting Bracket; 215 bk
407.92	Building-in Shroud; 215 bk
407.96	Foam Seal; 215 bk
408.57	Elbow RH; 215 bk
408.58	Elbow LH; 215 bk
408.68	Checkvalve Cartridge; 215 dk/oemk (2)
408.69	Inlet/Outlet Adaptor; 215 bk/oemk
408.74	Component Pack; 215 bk
408.75 •	Checkvalve Cartridge; 215 bk (2)
408.76	Concealing Plate Assembly; 215 bk
408.77	Concealing Plate Bracket Assembly; 215 bk
408.78 •	Bracket Component Pack; 215 bk
408.91 •	Strainer Pack; 215 series
408.92 •	Service Pack; 215 series
408.99	Thermostatic Cartridge Assembly, 215 Series
575.09	Wrench Key, 3 mm
575.12	Wrench Key, 2.5 mm; 215 bk/oemk
611.72 †*	Locking Screw, uses 3 mm wrench key
631.61	'O' seal
983.07 •	Lubricant Sachet

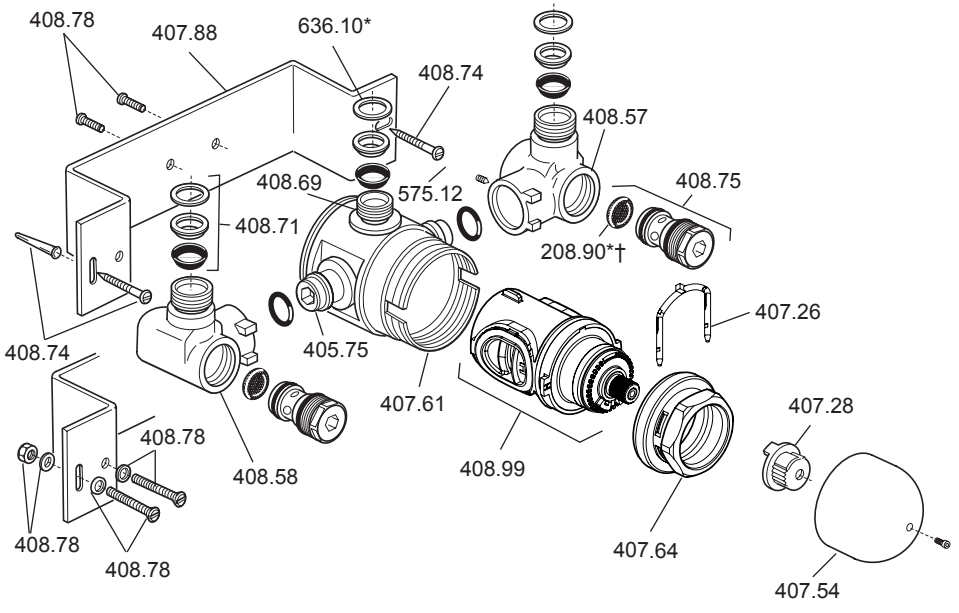
* Included in 215 Service Pack 408 92

† Included in 215 Strainer Pack 408 91

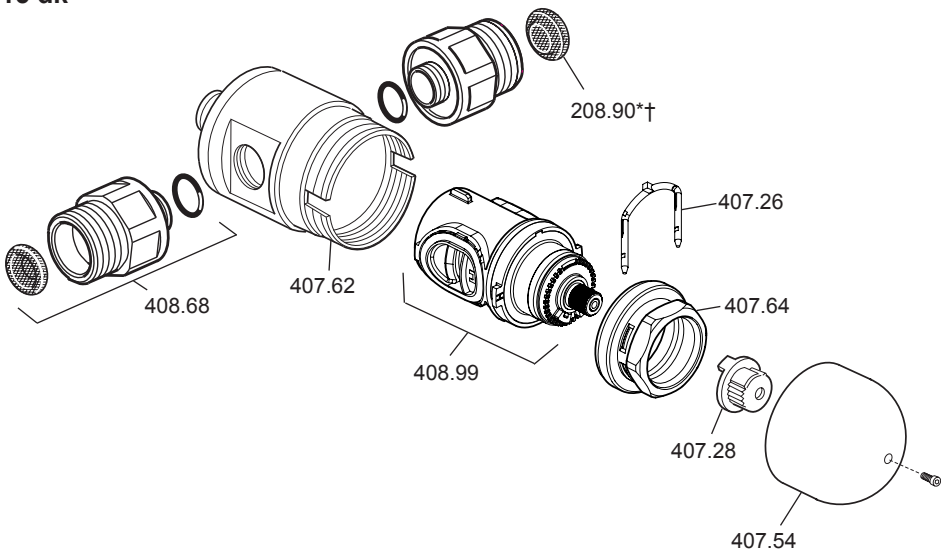
• These spares are supplied with a sachet of lubricant.

All spare parts listed above are supplied singly. Figures in brackets denote quantity used on mixer model. Kohler Mira has a policy of continual product development and parts illustrated may not be identical to those supplied.

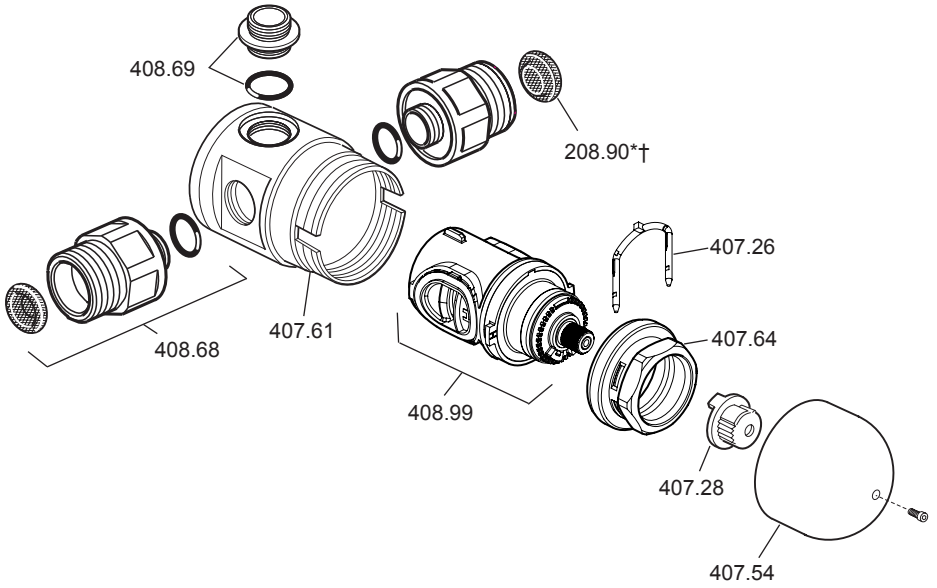
215 bk



215 dk



215 oemk



Rada 215 series: Strainer and Service Packs component matrix

Part Ref.	Qty	Part No.	Component	215zk	215bk	215dk/ oemk
408 91 Strainer Pack	2x	208 90	Strainer Screen	2	2	2
	4x	630 59	Seal		4	
	3x	636 10	Nylon Washer (15 mm)			1
	2x	636 11	Nylon Washer (22 mm)	2		2
	1x	983 07	Lubricant	1	1	1
408 92 Service Pack	2x	208 90	Strainer Screen	2	2	2
	2x	1617 143	Inlet Seal	2	2	2
	1x	407 46	Seal	1	1	1
	1x	408 19	Lip-Seal Outlet			
	1x	611 72	locking Screw	1	1	1
	2x	618 22	Grubscrew	2	2	
	1x	630 13	Seal			
	2x	630 41	Seal	2	2	
	4x	630 59	Seal	2	4	
	5x	631 61	Seal	3	3	2
	3x	636 10	Nylon Washer (15 mm)			1
	2x	636 11	Nylon Washer (22 mm)	2		2
	1x	983 07	Lubricant	1	1	1
1628 068 Adjustable Temp Knob Pack	1x	408 12	Knob	1	1	1
	1x	615 65	Screw	1	1	1
	1x	408 66	Body Shroud	1	1	1

CUSTOMER CARE

Guarantee of Quality

Kohler Mira Limited guarantee this product against any defect in materials or workmanship for a period of two years from the date of purchase.

To be covered by this guarantee, service work must only be undertaken by Kohler Mira Limited or by their approved agents.

Not covered by this guarantee

Damage or defects arising from incorrect installation, improper use or failure to maintain in accordance with the instructions in this product manual, including the build-up of limescale. Defects or damage if the product is taken apart, repaired or modified by a person not authorised by Kohler Mira Limited or by their approved agents.

After Sales Service - how we can help you

We have a network of fully trained staff ready to provide assistance, should you experience any difficulty operating your Rada equipment.

Spare Parts

All functional parts of Rada products are kept for up to ten years from the date of final manufacture. If during that period, our stock of a particular part is exhausted we will, as an alternative, provide an equivalent new product or part at a price equating to the cost of repair to the old, bearing in mind the age of the product.

All spares are guaranteed for 12 months from date of purchase. Spares that have been supplied directly from us can be returned within one month from date of purchase, providing that they are in good order and the packaging is unopened.

Note! Returned spares will be subject to a 15% restocking charge and authorisation must be obtained before return.

Customer Care Policy

If within a short space of time of installation the product does not function correctly, first check with the operation and maintenance advice provided in this Product Manual to see if the difficulty can be overcome. Failing this, contact your installer to make sure that the product has been installed and commissioned in full accord with our detailed installation instructions. If this does not resolve the difficulty, please ring your nearest Rada contact, who will give you every assistance and if appropriate, arrange for your local service engineer or agent to call on a mutually agreeable date.

Contact:

Thorntwaite Technologies Pty Ltd

Howthorn House, 79 Victoria Avenue,

Chatswood, Sydney,

New South Wales, **AUSTRALIA**

Tel: 029 417 4466 Fax: 029 417 5231

www.thorntwaite.com.au

Rada is a registered trade mark of
Kohler Mira Limited.

The company reserves the right to alter
product specifications without notice.

www.radacontrols.com

rada

