



**THORNTHWAITE TECHNOLOGIES**  
THE SHOWER & WASHROOM SPECIALISTS

Rada Sense  
for basins  
& showers

**rada** Sense

**rada**

[www.thornthwaite.com.au](http://www.thornthwaite.com.au)

# radaSense



## Easy Programming

Rada Sense helps maintenance personnel to manage warm water more effectively to showers and basins and routine compliance tasks – all done via a netbook or laptop with Microsoft Windows.

The software included with Rada Sense is easy to understand and use. Once it is loaded onto your computer, you can programme the tasks in and set the performance criteria for the basin or shower. Changes can be made at any time just as easily.

## Introducing Rada Sense

**Sleek, stylish, sophisticated... Rada Sense is a revolution for showers and basins in your washroom**

Imagine this if you will...

Walk into a washroom and be wowed by the design. Then be surprised by the simplicity and ease of washing. Place your hand in front of the sleek chrome control panel and that's it, the water flows. Simple.

Perhaps you want the water to be a little warmer or cooler. Place your hand over the warm or cold sensor - and it's done.

### **That's Rada Sense.**

But it's what you can't see that makes this a truly different approach to managing warm water for basins and showers in your washroom. Rada Sense is smarter, safer and more hygienic.

### **First of its kind technology**

Rada Sense makes hand washing and showering a simple and hygienic experience, and features advanced technology.

Incorporating the T-Logic™ digital intelligence system and a unique digital mixing valve, Rada Sense controls water temperature, flow times with automatic water shut-off, duty flushing, thermal disinfection and data logging via a netbook or laptop.

## Digital Mixing Valve

Rada Sense features a digital mixing valve to deliver safe warm water to basins and showers.

With over 75 years' innovation and engineering experience, Rada has taken warm water management to a new level.

The digital mixing valve has an integrated solenoid valve that controls the flow of water as required, with the added safety of shutting off the water flow should adverse conditions arise.

## T-Logic™ Digital Intelligence

From programming of temperature and water flow times to regular maintenance, T-Logic™ gives your facility managers much greater control to manage safety and hygiene requirements.

What makes Rada Sense a valuable asset in your washroom is the ability of T-Logic™ to capture information about performance, perform fault-diagnosis, usage data – via a netbook or laptop. This helps your managers to plan for preventative maintenance and ensure optimal



## No Touch Control

Rada Sense features no-touch on/off control and temperature adjustment for improved hygiene.

The control panel features LED lights for temperature indication and is the communications point for managing Rada Sense. The fact that users don't touch the panel to activate water flow or adjust temperature significantly reduces the risk of cross infection.

This makes Rada Sense an ideal solution for hospitals and health care facilities where infection control issues such as MRSA or golden staph need to be managed by frequent hand washing.

performance. T-Logic™ also constantly monitors for any issues concerning water temperature safety, performing eight safety checks 40 times per second. Rada Sense also incorporates a safety shutdown feature, which is designed to protect users from scalding, including in the event of electrical power or water supply failure.

It's called digital intelligence. And that makes sense.

## Water Savings

Like many of Thornthwaite's products, Rada Sense is designed to save you water.

Simply programme the flow duration, and Rada Sense will be ready to deliver warm water to your basins and showers for a pre-set time. It will shut off water to the outlet automatically, minimising water usage whilst still providing a comfortable wash. Rada Sense can also be switched off manually by placing your hand in front of the control panel.



## Duty Flush and Thermal Disinfection

Legionella and other bacteria that can be found in water present serious issues for facility managers. Protecting users from infection and serious illness is a responsibility that is of the utmost importance, which is where Rada Sense comes in. Rada Sense can be programmed to provide a duty flush, which automatically flushes out stagnant water from any outlets that have not been used within a pre-set period of time.

Thermal disinfection can also inhibit the growth of water-borne bacteria, which is vital for ensuring safe water delivery. Using a computer or netbook, your maintenance staff can activate the thermal disinfection cycle to flush out your water system at a temperature above 60°C.

Rada Sense makes duty flushing and thermal disinfection simpler to perform and monitor.

**THORNTHWAITE TECHNOLOGIES**  
THE SHOWER & WASHROOM SPECIALISTS

**Head Office**

79 Victoria Avenue  
Chatswood NSW 2067  
Australia

**Postal Address**

PO Box 560  
Willoughby NSW 2068  
Australia

**Contact:**

Tel: 02 9417 4466  
Tel: 1300 137 170  
Fax: 02 9417 5231  
email: enquiries@thornthwaite.com.au  
www.thornthwaite.com.au

**NSW HEALTH APPROVED**

*radaSense*



Tap Equipment

[www.thornthwaite.com.au](http://www.thornthwaite.com.au)

© 2010 Thornthwaite Technologies. All Rights Reserved

**Part Numbers**

**Basin**

Rada Sense digital mixing valve  
- basin sensor (6 L/min, WELS 6 stars)  
Part number: 1503680

Other flow rates available:  
4 L/min and 9 L/min

**Shower**

Rada Sense digital mixing valve  
- shower sensor  
Part number: 1503684



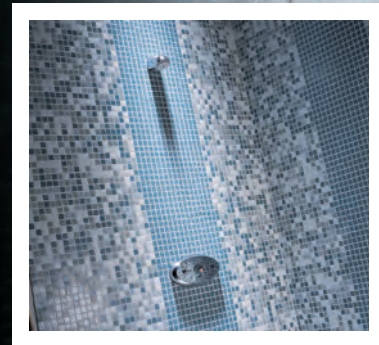
A variety of spouts are available.

**Approvals & Compliance**

Approved to Australian Standard AS 4032.1  
(Watermark)

Designed to IEC 61508  
C-Tick EMC conformance

Approved for use in NSW Health Care  
Facilities



**WELS Registrations**

**Tap equipment**

Supplied as standard 6 L/min

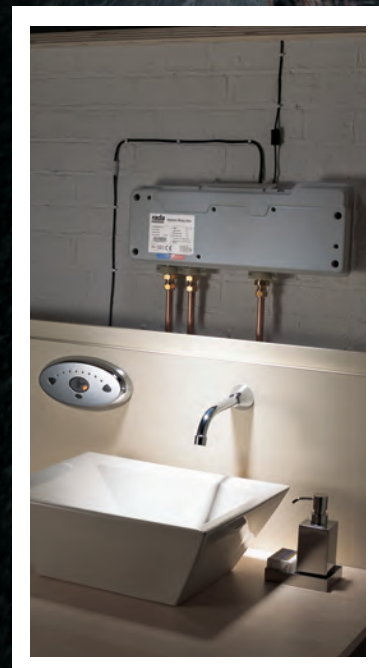
No rating if supplied without a flow  
regulator - must use a WELS registered  
spout in this case.

**Showers**

3 star WELS rating when supplied with the  
following showerheads:

- VR105
- VR106
- showerhead

No rating if supplied without a Rada VR  
showerhead. Rada Sense can be used with  
another WELS registered showerhead in  
this case.



**Rada Vandal Resistant  
Showerheads**

Rada VR showerheads can be utilised with  
Rada Sense, Rada Pulse and Presto 512.

Rada VR showerheads are WELS registered  
and provide a flow rate of up to 8.5 L/min,  
an easy way to substantially reduce water  
consumption and provide a great shower.

