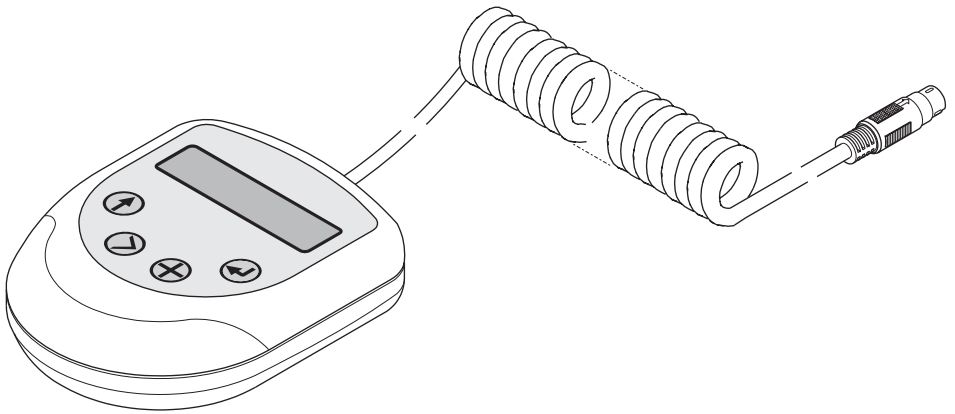


# Pulse **rada**

## **HAND HELD PROGRAMMER**



## PRODUCT MANUAL

### **IMPORTANT**

**Installer:** This manual is the property of the customer and must be retained with the product for maintenance and operational purposes.

# TABLE OF CONTENTS

	page
INTRODUCTION	3
DESCRIPTION	3
SPECIFICATION	3
PACK CONTENTS	4
DIMENSIONS	4
INSTALLATION	5
MAINTENANCE	5
OPERATION	6
NOTES	22
CONTACTS	23
CUSTOMER CARE	Back Cover

## INTRODUCTION

The Rada Pulse range of electronic products combine together to produce a controlled washroom environment offering a high degree of energy and water conservation.

## DESCRIPTION

The Rada Pulse Hand Held Programmer is a hand held unit which enables you to program the Rada Pulse Control Box. The programmer has an extendable lead which plugs into a socket in the top of the Control Box.

The programmer has a two line (alpha numeric) backlit display and push buttons which allow the user to navigate through the menu choices and set the configuration data. This will allow the user to set the parameters such as activation time, delay time and post flush waiting time etc. for each outlet.

The controller is multilingual and the user can select the appropriate language via the menu system.

## SPECIFICATION

### **Rada Pulse Hand Held Controller**

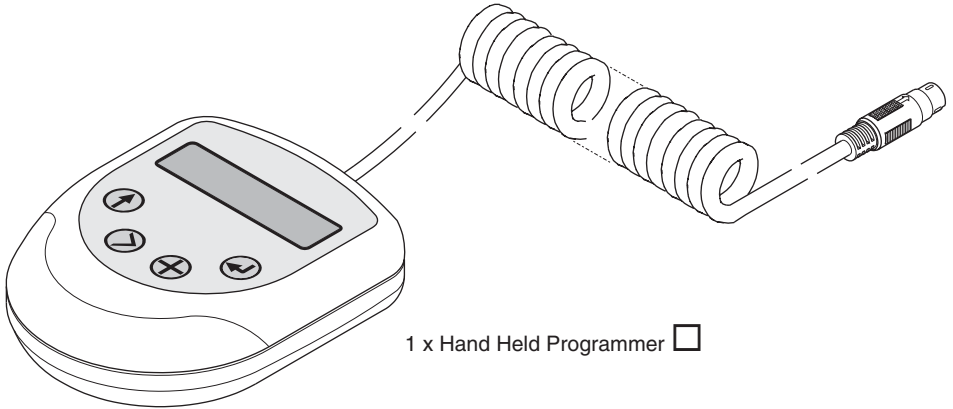
Material - ABS plastic.

Operating voltage - 12V D.C (power supplied from the Rada Pulse Control Box).

# PACK CONTENTS

☑ Tick the appropriate boxes to familiarize yourself with the part names and to confirm that the parts are included.

## 1. Rada Pulse Hand Held Programmer

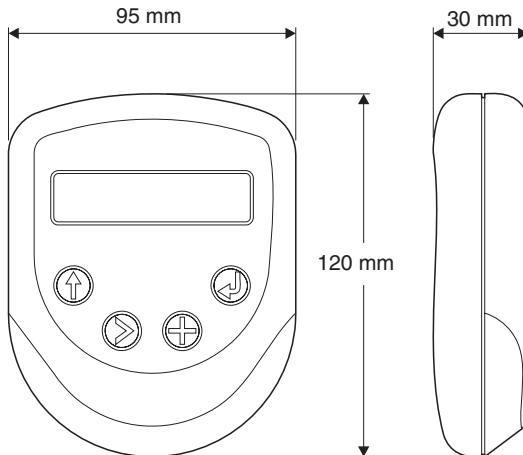


## 2. Documentation

1 x Product Manual



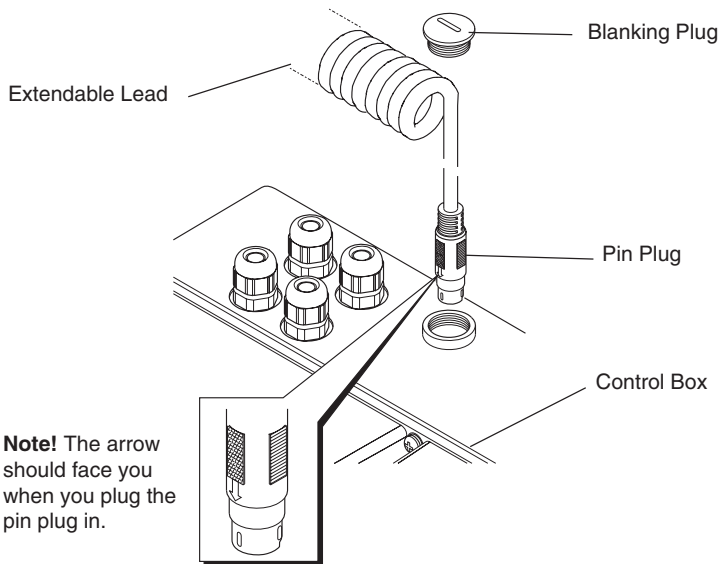
# DIMENSIONS



# INSTALLATION

## Rada Pulse Hand Held Programmer

1. Remove the blanking plug from the top of the Rada Pulse Control Box.
2. Connect the pin plug on the extendable lead to the connection point (care must be taken not to force the pin plug into the socket).
3. From a suitable position, program the control box (refer to **OPERATION**).



## Connection of the Hand Held Programmer to the Control Box

# MAINTENANCE

Clean surface with damp cloth, or with mild detergents or soap solutions.

**Warning!** Many household and industrial cleaning products contain mild abrasives and chemical concentrates. These products should not be used on polished or chrome plated surfaces.

# OPERATION

The control unit has a two line (alpha numeric) backlit display and four push buttons allow the user to navigate through the menu choices and set the configuration data.

The four control unit push buttons are as follows:

Two Line Alpha Numeric Display



## Back

Pressing the back key at any time during the procedure will take you back to the previous menu.

## Select

Pressing the select key will enable you to change your option, if more than one option is available.

## Enter

Pressing the enter key will select the menu option and save the settings.

## Increase

Pressing the increase key will increase the time period in increments of seconds, minutes or hours depending on the option selected.

With the hand held programmer plugged in to the control box you can set the following options.

1. **Language** - The hand held controller is multilingual and you have the option to set the following languages; Deutsch, Netherlands, Francais, Svenska, Novege, Espanol, Polski, Chechoslovakia and English.
2. **System Information** - By selecting system information you can get an overview of the system and find out what auxiliary functions are active or not active, what channels are active or not active and whether or not there are any errors in the system (e.g. valves or channels).
3. **Program a Channel** - Using this function you can program channels 1 to 10 to one of the following; W.C, washbasin \*, shower, urinal or not in use. Other options available when you get into the programming sequence are; flush times, duty flushes, overrun times, flow times etc. All of the programming is explained in greater detail on the flow charts that follow.

**Note!** \* For Bathfill applications use the washbasin function.

4. **Read a Channel and Write a Channel** - With this facility you can copy what you have programmed into one channel and write it to another channel.

For example; If you have programmed channel 1 as a shower and set all of the other options and you wish to copy all of this information to another channel, say channel 3, then this function is useful.

5. **Program an Auxiliary** - Using this function you can program the auxiliary functions of the control unit such as fan, light and disinfection.


### **WARNING!**

**High water temperatures used during the disinfection process can be discharged from the shower heads or taps during this process. Suitable safety precautions MUST be taken to ensure that persons are not exposed to the risk of scolding.**

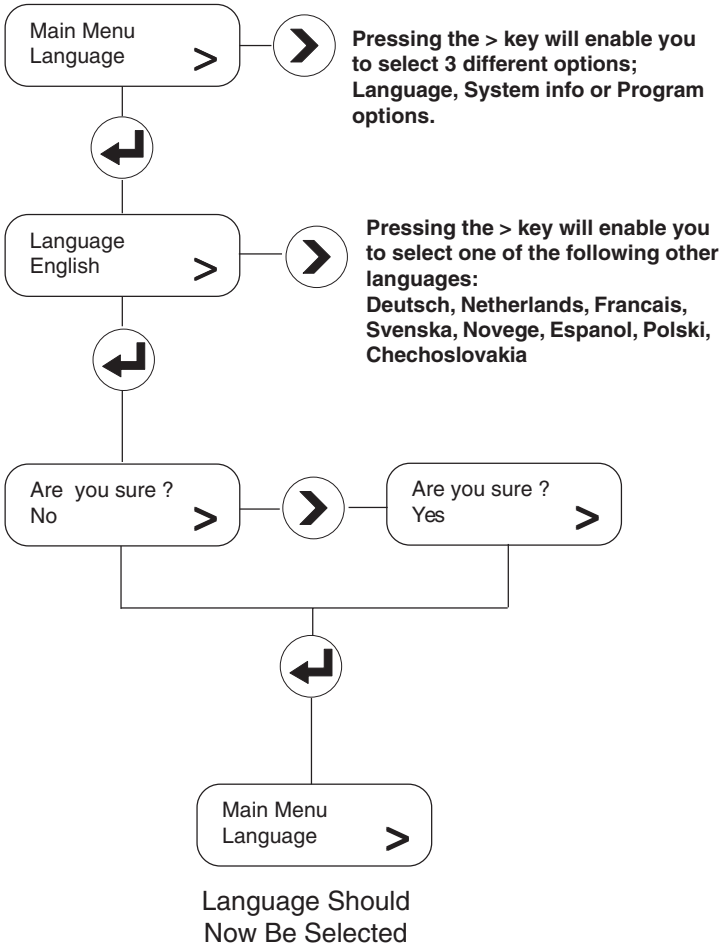
6. **Read the Unit and Write the Unit** - With this facility you can copy what you have programmed into one control box and write it to another control box. This function is particularly useful where more than one control box is installed.

**Note!** If while operating the controller the display shows "communication error", this indicates a connection problem either on the control box connector, the pin plug or the hand held controller.

# To Select Language

**Note!**  Pressing the back key at any time during the procedure will take you back to the previous menu.

## Main Menu Screen





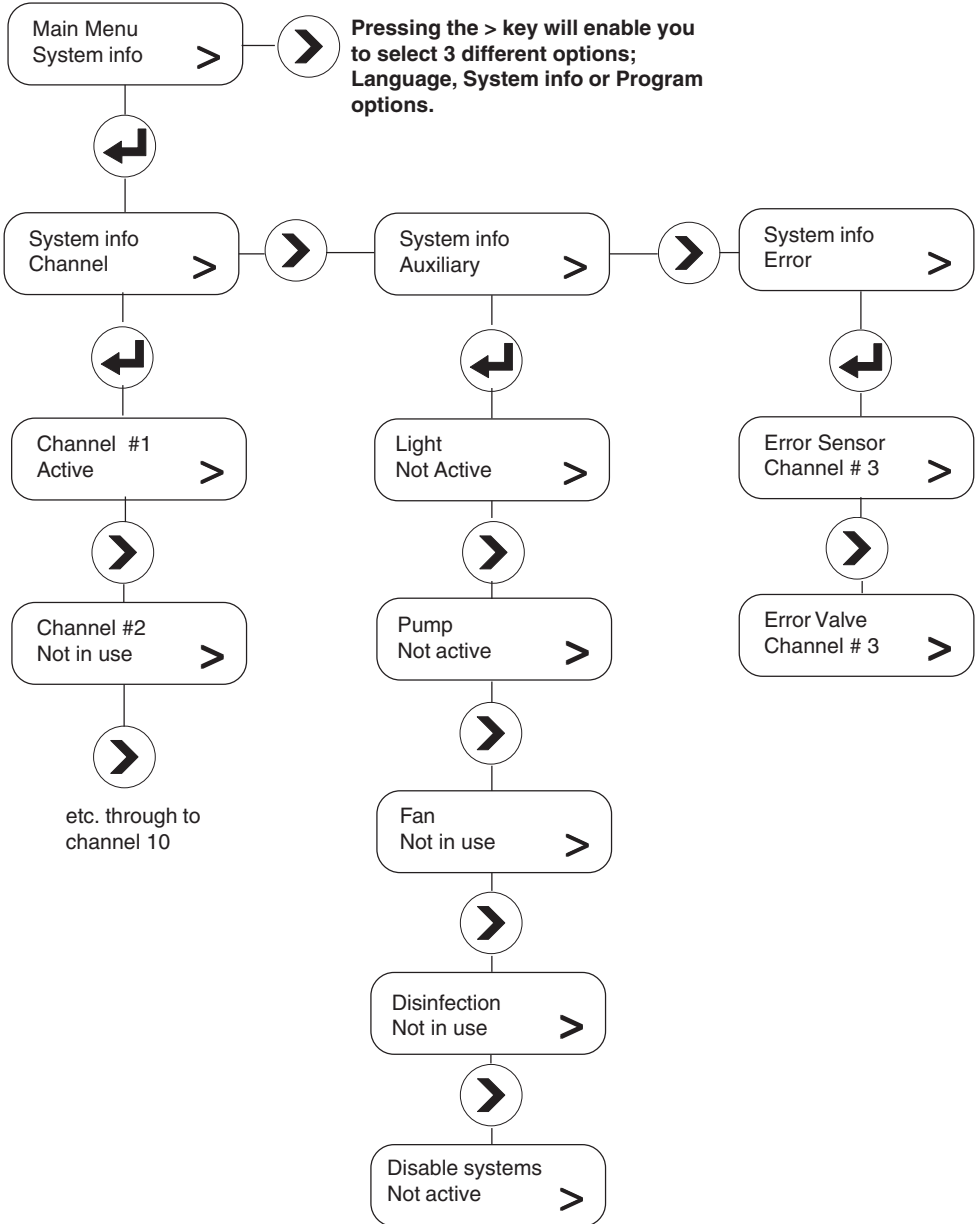
# To Select System Information

**Note!**



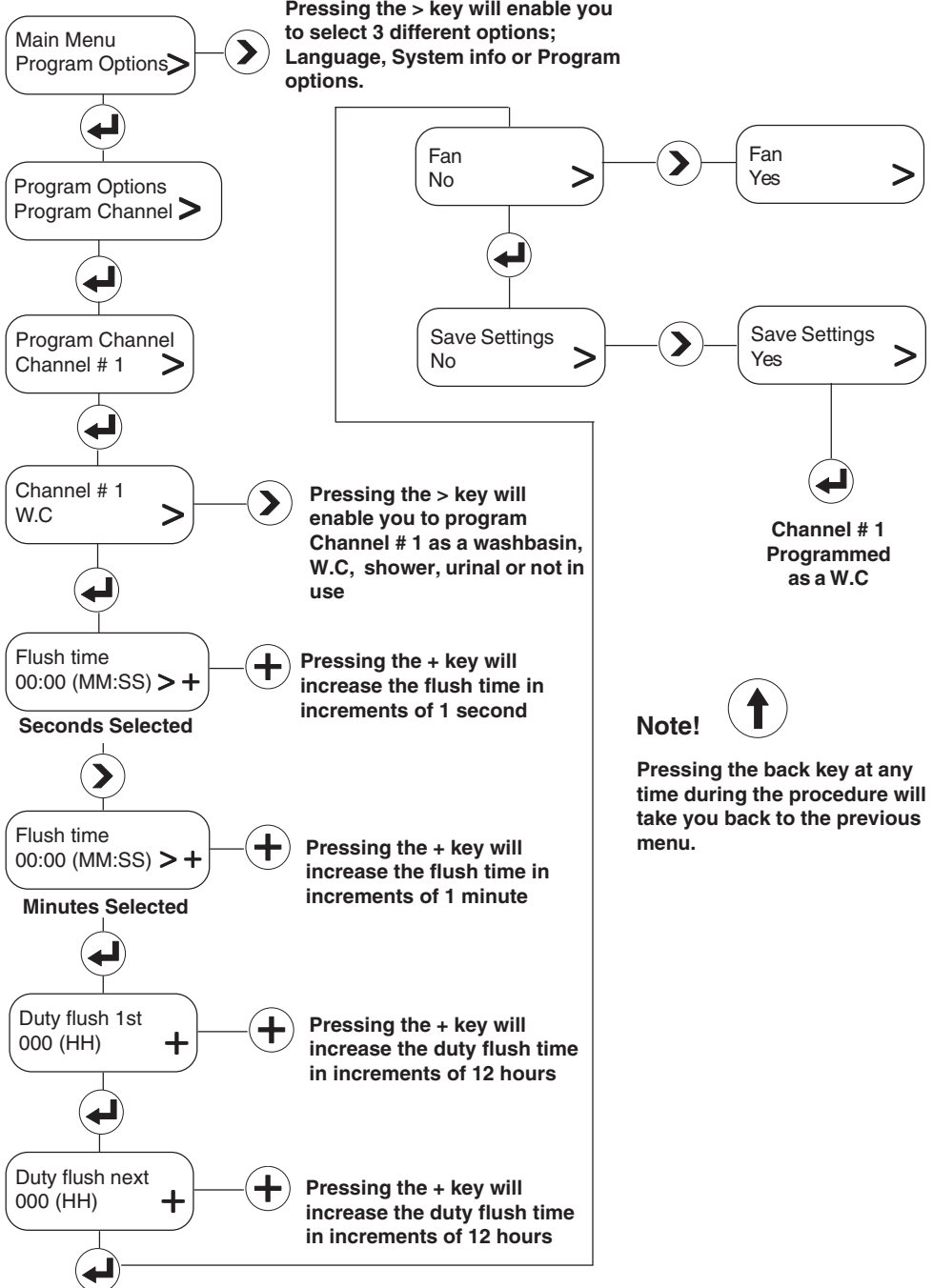
Pressing the back key at any time during the procedure will take you back to the previous menu.

## Main Menu Screen



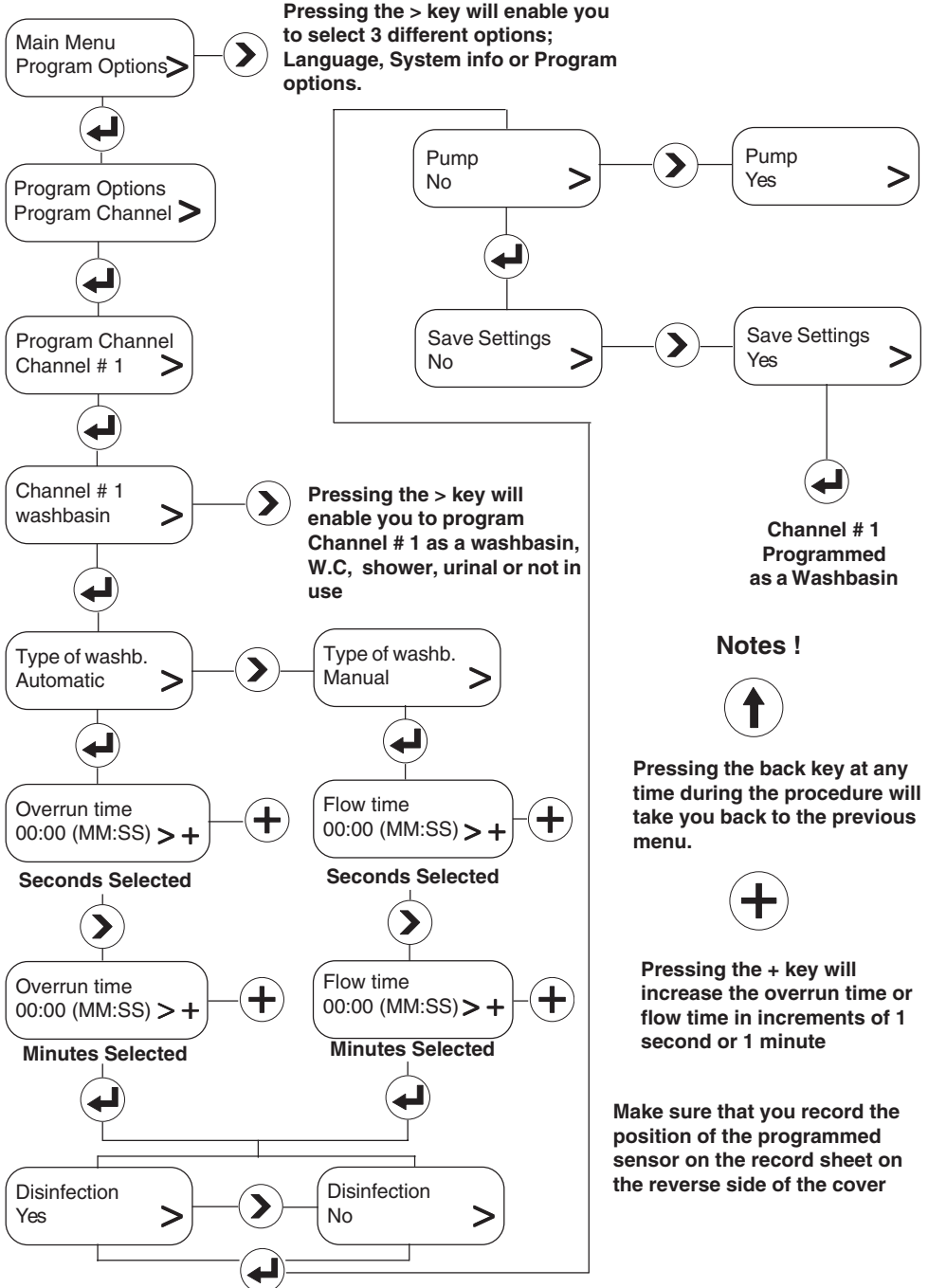
# To Program a Channel for a W.C

## Main Menu Screen



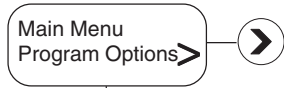
# To Program a Channel for a Washbasin

## Main Menu Screen



# To Program a Channel for a Shower

## Main Menu Screen



Pressing the > key will enable you to select 3 different options; Language, System info or Program options.

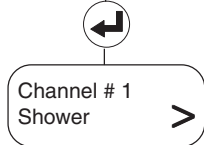
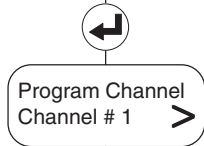
### Notes !



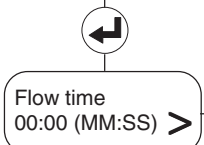
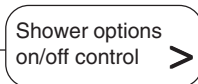
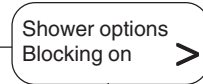
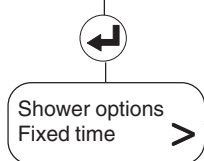
Pressing the back key at any time during the procedure will take you back to the previous menu.



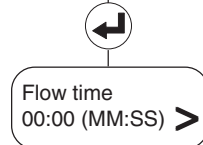
Pressing the + key will increase the flow time in increments of 1 second or 1 minute



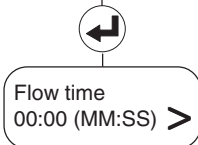
Pressing the > key will enable you to program Channel # 1 as a washbasin, W.C, shower, urinal or not in use



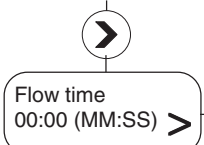
Seconds Selected



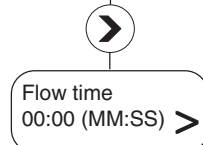
Seconds Selected



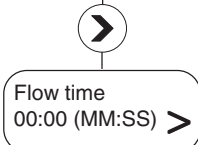
Seconds Selected



Minutes Selected



Minutes Selected

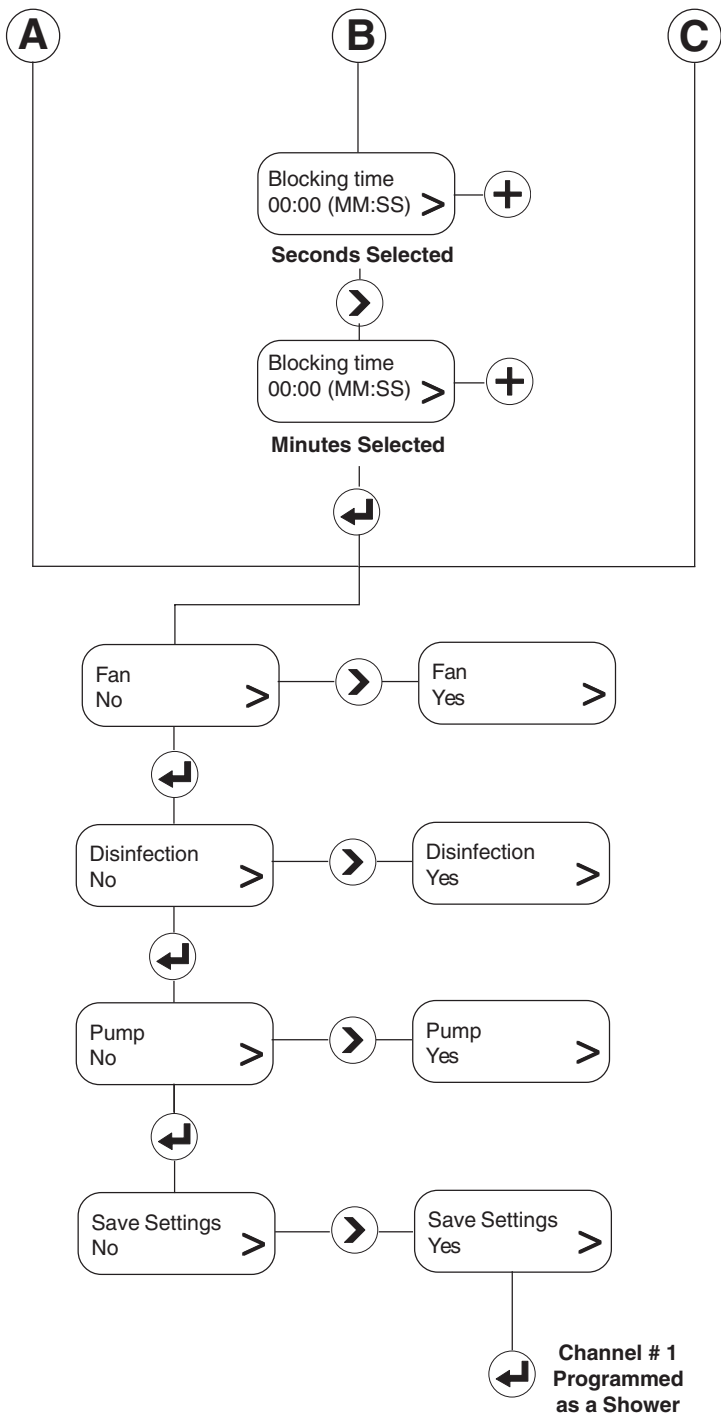


Minutes Selected

A

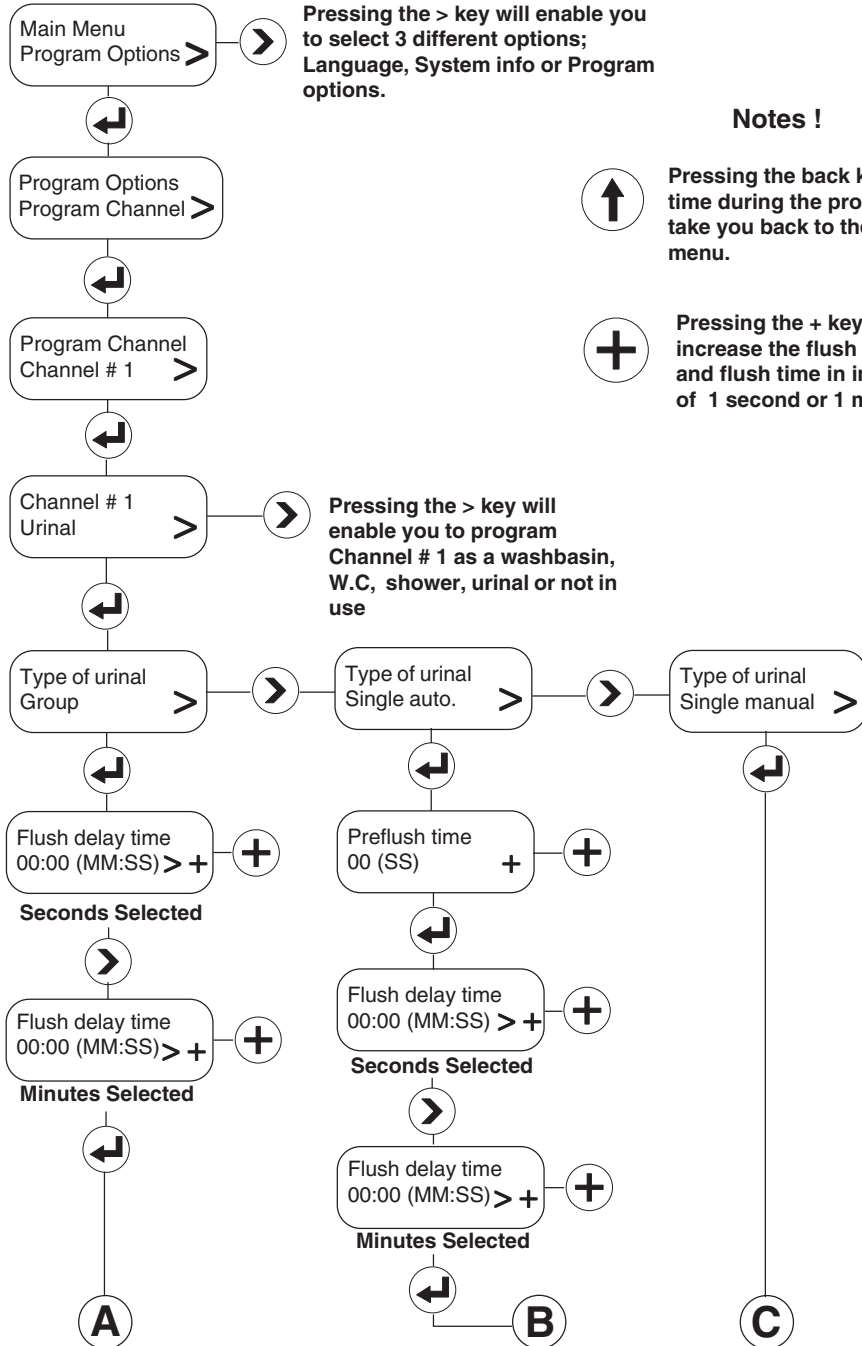
B

C



# To Program a Channel for a Urinal

## Main Menu Screen



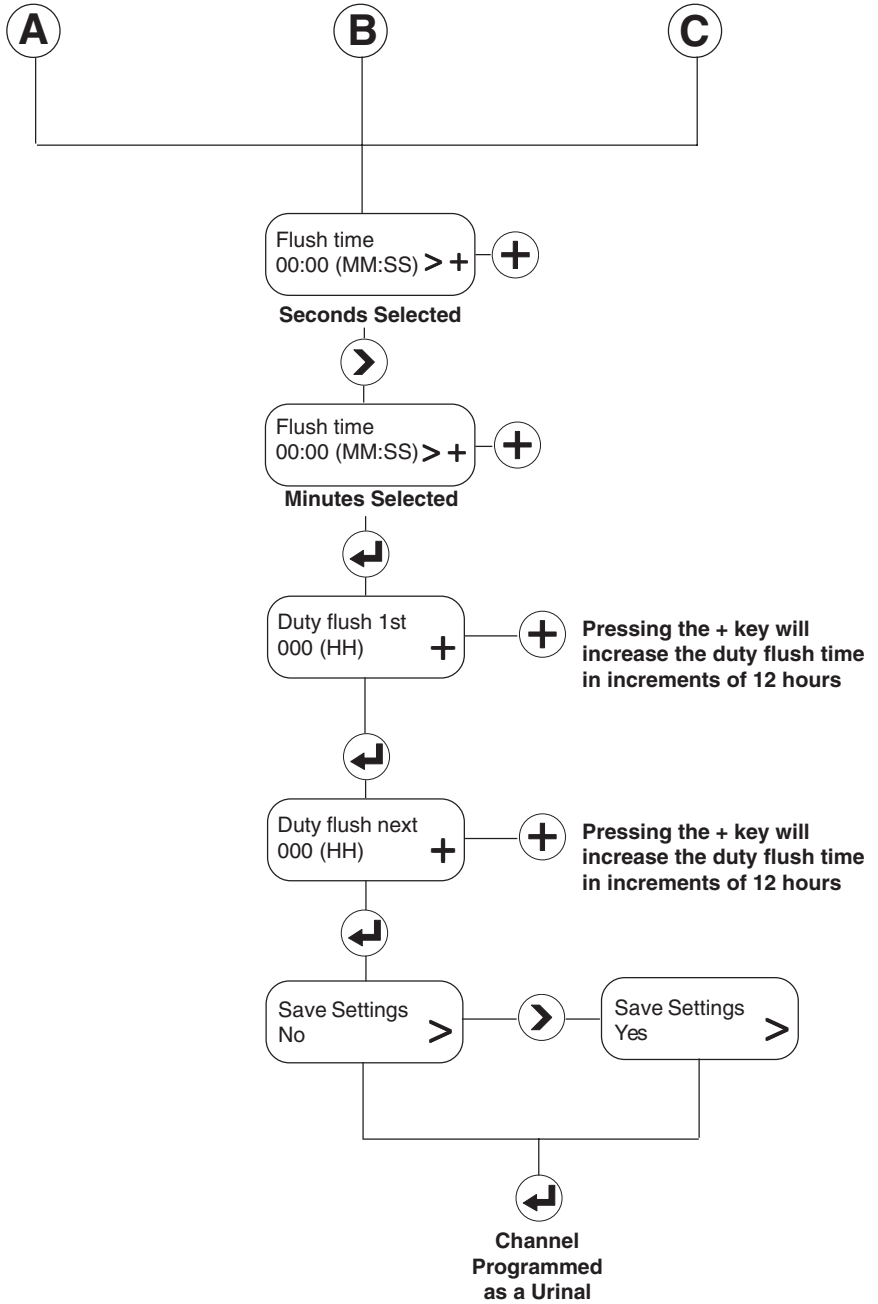
Pressing the > key will enable you to select 3 different options; Language, System info or Program options.

### Notes !

Pressing the back key at any time during the procedure will take you back to the previous menu.

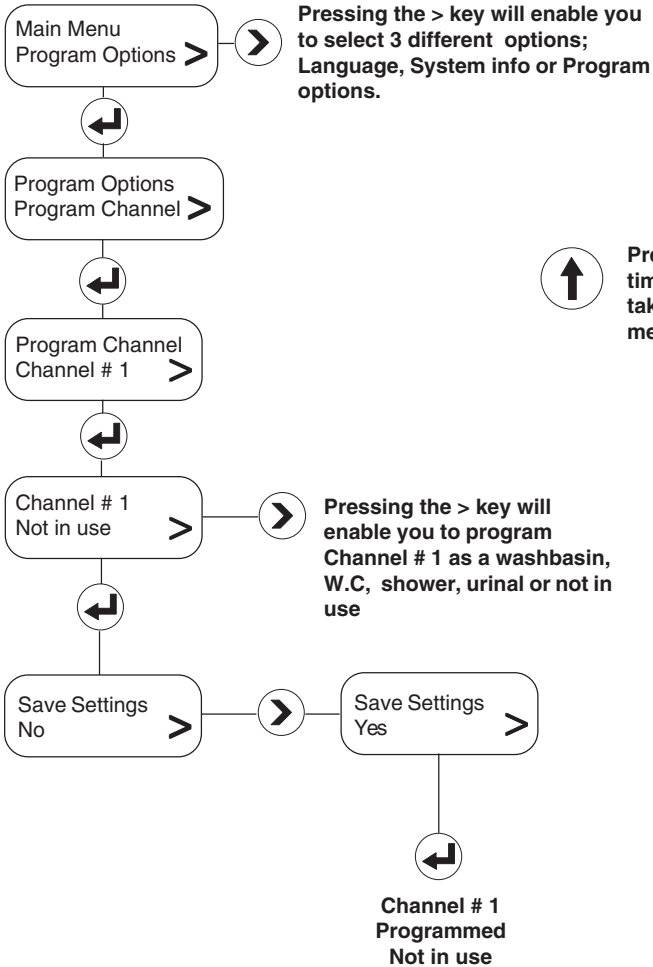
Pressing the + key will increase the flush delay time and flush time in increments of 1 second or 1 minute

Pressing the > key will enable you to program Channel # 1 as a washbasin, W.C, shower, urinal or not in use



# To Program a Channel that is Not in Use

## Main Menu Screen



## Notes !

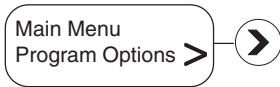


Pressing the back key at any time during the procedure will take you back to the previous menu.

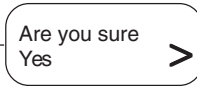
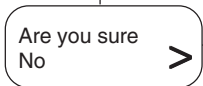
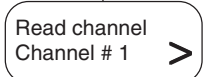
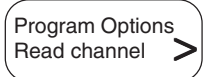


# To Read a Channel (Copy Program)

Main Menu Screen



Pressing the > key will enable you to select 3 different options; Language, System info or Program options.



Channel # 1  
Copied

## Notes !

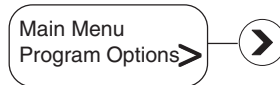


Pressing the back key at any time during the procedure will take you back to the previous menu.

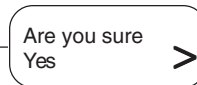
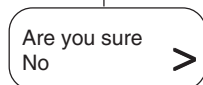
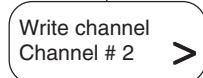
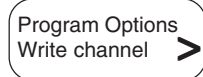
To transfer the read data (above) to other channels follow the write channel procedure (below)

# To Write a Channel

Main Menu Screen



Pressing the > key will enable you to select Language, System info or Program options.



Channel # 1  
Copied

## Notes !

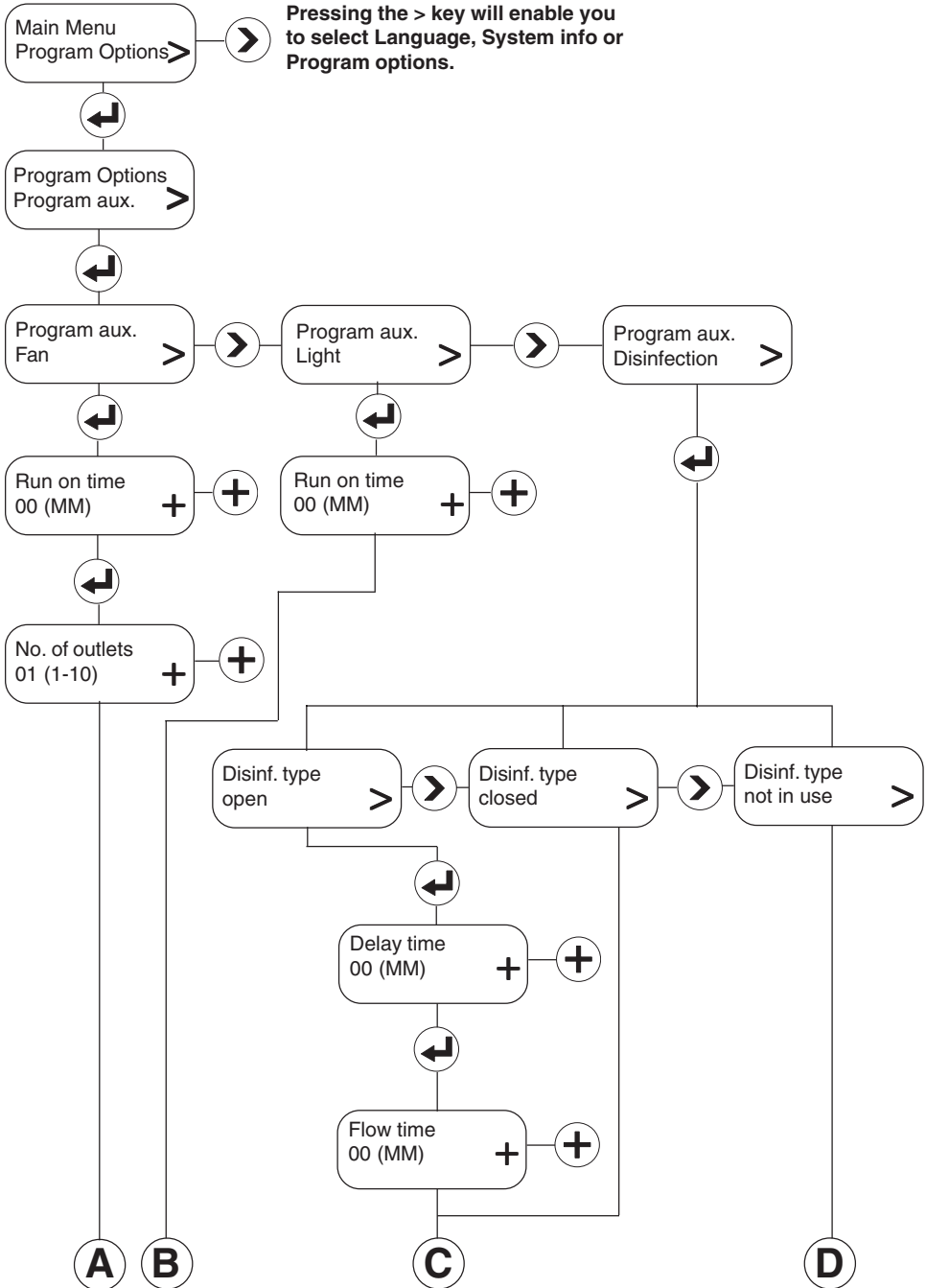


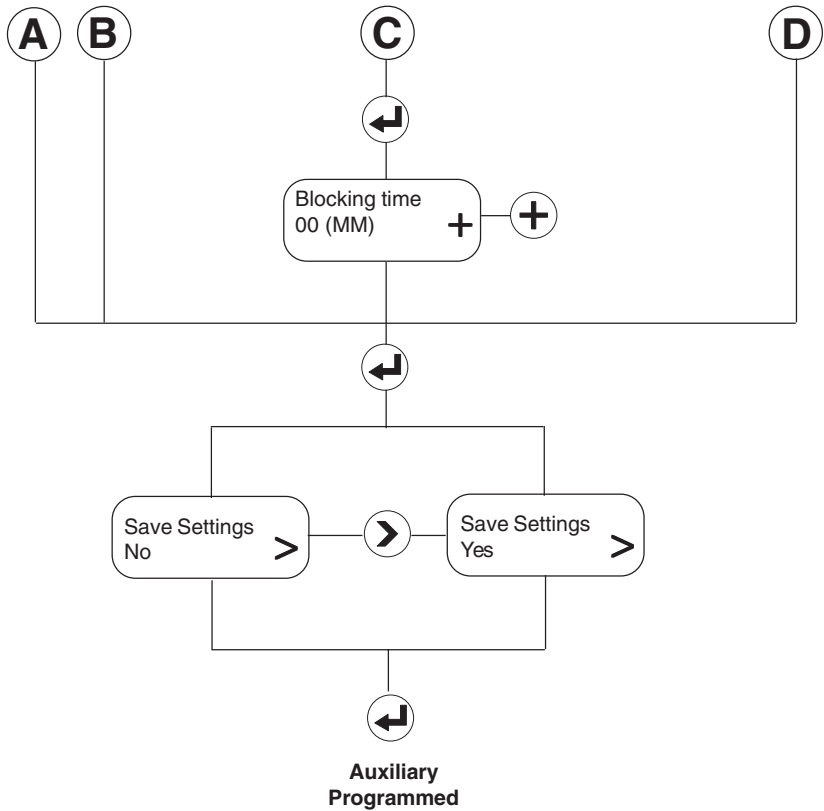
Pressing the back key at any time during the procedure will take you back to the previous menu.

Copied program can be written into selected channel or channels

# To Program an Auxiliary

## Main Menu Screen





Pressing the + key will increase the run on time or delay time in increments of 1 minute



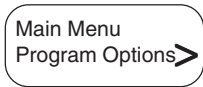
Pressing the back key at any time during the procedure will take you back to the previous menu.

## WARNING!

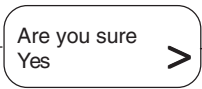
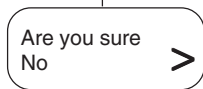
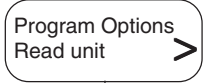
High water temperatures used during the disinfection process can be discharged from the shower heads or taps during this process. Suitable safety precautions **MUST** be taken to ensure that persons are not exposed to the risk of scolding.

# To Read the Unit

## Main Menu Screen



Pressing the > key will enable you to select Language, System info or Program options.



Unit Read

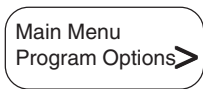
### Notes !



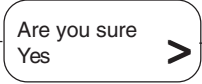
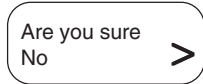
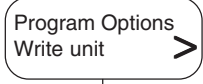
Pressing the back key at any time during the procedure will take you back to the previous menu.

# To Write the Unit

## Main Menu Screen



Pressing the > key will enable you to select Language, System info or Program options.



Unit Written

### Notes !



Pressing the back key at any time during the procedure will take you back to the previous menu.

# NOTES

# NOTES

# CONTACTS

## **H. G. Thornthwaite Pty Ltd.**

PO Box 560  
Willoughby 2068  
New South Wales, **AUSTRALIA**  
Tel: (0061) 2 941 74466 Fax: (0061) 2 9417 5231

## **NV De Melker Belgium SA**

Beukenlei 50, 2960 St. Job-in-'t-Goor,  
**BELGIUM**  
Tel: (03) 633 2150 Fax: (03) 633 2103

## **Rada Mechanical Products Ltd.**

3993 Stouffville Road  
Stouffville  
Ontario, L4A 7X5, **CANADA**  
Tel: (001) 905 640 0538 Fax: (001) 905 640 9079

## **Koncept Limited**

Letohradská 54,  
17000 PRAGUE 7  
**CZECH REPUBLIC**  
Tel: (00) 42 022 057 1696  
Fax: (00) 42 022 057 1697

## **Pamtec Oy**

PO Box 13, Vantaa 01741 **FINLAND**  
Tel: (00) 358 989 55061 Fax: (00) 358 989 0980

## **Les Robinets Presto**

4 Rue Lavoisier Boite Postale 74  
17110 Saint Georges De Diclonne, **FRANCE**  
Tel: (00) 33 146 123456 Telex: 632 923F  
Fax: (00) 33 149 020012

## **Rada Armaturen GmbH**

An der Trift 65d,  
Dreieich 63303, **GERMANY**  
Tel: (00) 49 6103 98040 Fax: (00) 49 6103 980490

## **James Wong & Co., Ltd.**

Room1504 Westlands Centre,  
20 Westlands Road,  
Quarry Bay, **HONG KONG**  
Tel: (00) 852 2811 5868 Fax: (00) 852 2811 5740

## **Bocchi S.r.l.**

Corso Plebisciti 13, Milano 20129,  
**ITALY**  
Tel: (00) 3902 7012 3756 Fax: (00) 390 2738 0001

## **Japan Leonard Distributors**

No.2 10-3, Hama, Toyonaka City,  
Osaka 561-0817, **JAPAN**  
Tel: (00) 81 66 336 0321 Fax: (00) 81 66 336 1529

## **Multico Building Products Pte Ltd**

22A Lim Teck Boo Road  
Henley Industrial Building 01-01C/02-04  
Singapore 537002  
**SINGAPORE**

Tel: (00) 65 283 8888  
Fax: (00) 65 283 8138

## **De Melker B.V.**

De Schutterij 20, Postbus 65,  
3900 AB - Veenendaal,  
**THE NETHERLANDS**  
Tel: (0031) 318 524800 Fax: (0031) 318 52 5035

## **A L Byrne & Son Ltd.**

24 Gundry Street, Newton,  
**NEW ZEALAND**  
Tel: (0064) 937 96885  
Fax: (0064) 930 92720

## **Fluid Control Systems**

ul. Dobrogniewa 1G,  
01 - 438 Warszawa, **POLAND**  
Tel: (0048) 22 836 4353 Fax: (0048) 22 836 1528

## **Walker Croweller (Pty) Ltd.**

P.O. Box 1018, Bromhof 2154  
**SOUTH AFRICA**  
Tel: (0027) 1179 31031 Fax: (0027) 1179 31092

## **Comercial Sanitarios Presto SA**

Principio de Vergara 13,  
28001 Madrid, **SPAIN**  
Tel: (0034) 91676 8248 Fax: (0034) 91676 5541

## **Heno Trading AB**

PO Box 168, 16212 Stockholm,  
**SWEDEN**  
Tel: (00) 468 151175 Fax: (00) 468 167529

## **Peter Hiltbold AG**

Tumigerstrasse 42, Greifensee CH-8606,  
**SWITZERLAND**  
Tel: (00) 41 1940 60 56 Fax: (00) 41 194 089 40

## **Armstrong-Lynnwood Inc.**

221 Armstrong Boulevard, Three Rivers,  
Michigan 49093  
**USA**  
Tel: (001) 616 278 1413  
Fax: (001) 616 279 3130

# CUSTOMER CARE

## Guarantee

This product is guaranteed against any defect of materials or workmanship for one year from the date of purchase, provided that the product has been installed correctly and used in accordance with the instructions supplied.

Any part found to be defective during the guarantee period will be replaced or repaired - at our option - without charge, provided that the product has been properly used and maintained.

Routine cleaning and maintenance should be carried out in accordance with the instructions supplied.

The product should not be modified or repaired except by a person authorised by Rada.

Your statutory rights are in no way affected by this guarantee.

## After Sales Service - how we can help you

We have a network of fully trained staff ready to provide assistance, should you experience any difficulty operating your Rada equipment.

## Spare Parts

All functional parts of Rada products are kept for up to ten years from the date of final manufacture.

If during that period, our stock of a particular part is exhausted we will, as an alternative, provide an equivalent new product or part at a price equating to the cost of repair to the old, bearing in mind the age of the product.

## Customer Care Policy

If within a short time of installation the product does not function correctly, first check with the operation and maintenance advice provided in this Manual to see if the difficulty can be overcome.

Failing this, contact your installer to ensure that the product has been installed and commissioned in full accord with our detailed installation instructions.

If this does not resolve the difficulty, please ring your nearest Rada contact who will give every assistance and, if appropriate, arrange for the local Service Engineer or Agent to call on a mutually agreeable date.

---

## Contact:

---

### Rada Controls

Kohler Mira Limited  
Cromwell Road,  
Cheltenham, England,  
GL52 5EP, UK.

Tel.: + 44 (0)1242 221221

Fax.: + 44 (0)1242 221925

Rada is a registered trade mark of  
Kohler Mira Limited.

The company reserve the right to alter product  
specifications without notice.



BS EN ISO 9001 : 1994  
Reg. No. FM 14648