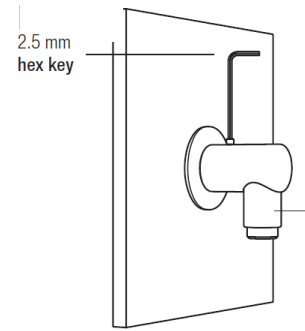
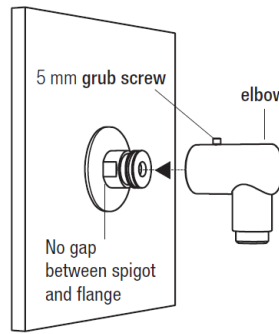
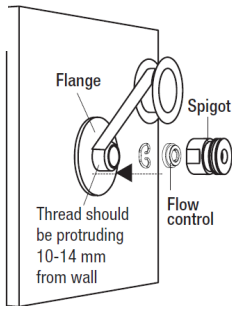


# Thornthwaite Wall Elbow Installation Manual



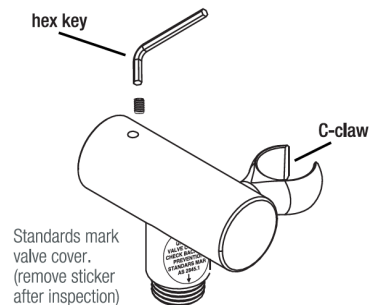
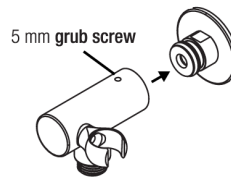
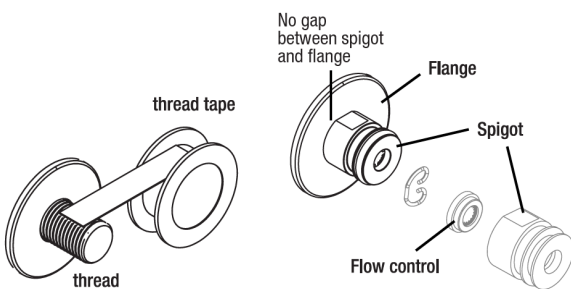
- Screw elbow onto wall fitting.
  - Remove spigot by loosening grub screw in elbow.
  - Fit flange over wall outlet. Seal thread with thread tape, screw spigot onto wall outlet until seated firm against flange.

**Note:** Remove flow control from spigot for full flow shower

- Make sure 5 mm grub screw is flush with inside of spigot housing (to avoid o-ring damage).
  - Push elbow onto spigot firmly ensuring that the o-ring seal is fully engaged and the elbow finishes flush with the wall plate.

- Make sure 5 mm grub screw is flush with inside of spigot housing to avoid o-ring wear is fully engaged and the bracket finishes flush with the wall plate.

# Thornthwaite Wall Outlet Installation Manual



**Note:** Remove flow control from spigot for full flow shower.

- Fit flange over water outlet.
  - Apply thread tape provided.
  - Thread should be protruding 10—14 mm from wall.

- Screw spigot on to water outlet and firm up against flange.

- Make sure 5 mm grub screw is flush with inside of spigot housing to avoid o-ring wear is fully engaged and the bracket finishes flush with the wall plate.

- Use 2.5 mm hex key supplied to tighten 5 mm grub screw. Ensure C-Claw is concaved down to accept hose conical.



- When installing all Thornthwaite Grab Rails / Hand Held shower kits, please ensure the hand-piece cradle support of the Thornthwaite Friction Slide is positioned to the side of the grab rail as shown in the image above.
- Cradle must NOT face user.
- Incorrect installation will only result in improper use and damage to the friction slide cradle.
- Warranty does not cover damage caused by improper use or faulty installation.