


The Rada logo is located in the top right corner of the image. It consists of the word "rada" in a bold, lowercase, sans-serif font, with three horizontal lines underneath it.

Rada Outlook

Stylish washrooms with cost-effective control of waterborne bacteria



It takes real intelligence to control costs and achieve compliance

The need to comply with the latest regulations is always critical - whether you are installing a new washroom or refurbishing existing facilities. That means establishing and demonstrating effective control of waterborne bacteria such as Legionella in line with the L8 Approved Code of Practice.

And of course minimising running costs has never been more important, with budgets tighter than ever. Rada Outlook is the digital thermostatic valve that brings both objectives within your grasp, along with advanced control and data collection.

Monitoring and compliance reporting

The advanced technology of Rada Outlook allows management and monitoring of automatic duty flushing and ability to download up to 12 months of operational history for Legionella compliance reports.

Programmable digital control for up to six basins or showers

Each Outlook valve can control any permutation of up to six showers or wash basins in a washroom. The digital valve has the power to reduce water and energy costs with programmable temperature and individual programmable outlet flow times for the showers and basin taps it controls.

Perfect for most property types

The versatile and advanced Rada Outlook washroom control system enables you to minimise blended water supply running costs and comply with regulations in many property types.



Commercial

Offices, service stations and shopping centres can all benefit from Outlook's combination of style, durability, economy and controllability.



Leisure

Having a concealed digital mixing valve, with a choice of stylish infrared sensors provides an enhanced shower experience for sports and leisure centre customers, while the timed flow settings help to control water and energy consumption.



Education

The durable wall-mounted controls with no moving parts are tough enough to withstand school and student life.

The Outlook system in detail



Digital mixing valve

- Serves up to six outlets - any combination of showers and basins
- Programmable flow times for each outlet
- Integrated solenoid valves
- Programmable duty flush times, intervals and temperature
- Supervised thermal disinfection without the need for a bypass valve



Sensor box

- Connections for up to six user-operated sensors
- Network connectivity can link multiple Rada Outlook systems (up to 31)
- Programming port connectable to laptop or PC via USB cable
- Connectivity to Building Management System (BMS) through the widely used Modbus protocol
- Holds data for up to 12 months duty flush history plus the latest supervised thermal disinfection data
- Connections for auxiliary functions such as extractor fans, passive infrared sensors (PIR), lighting system and key switch

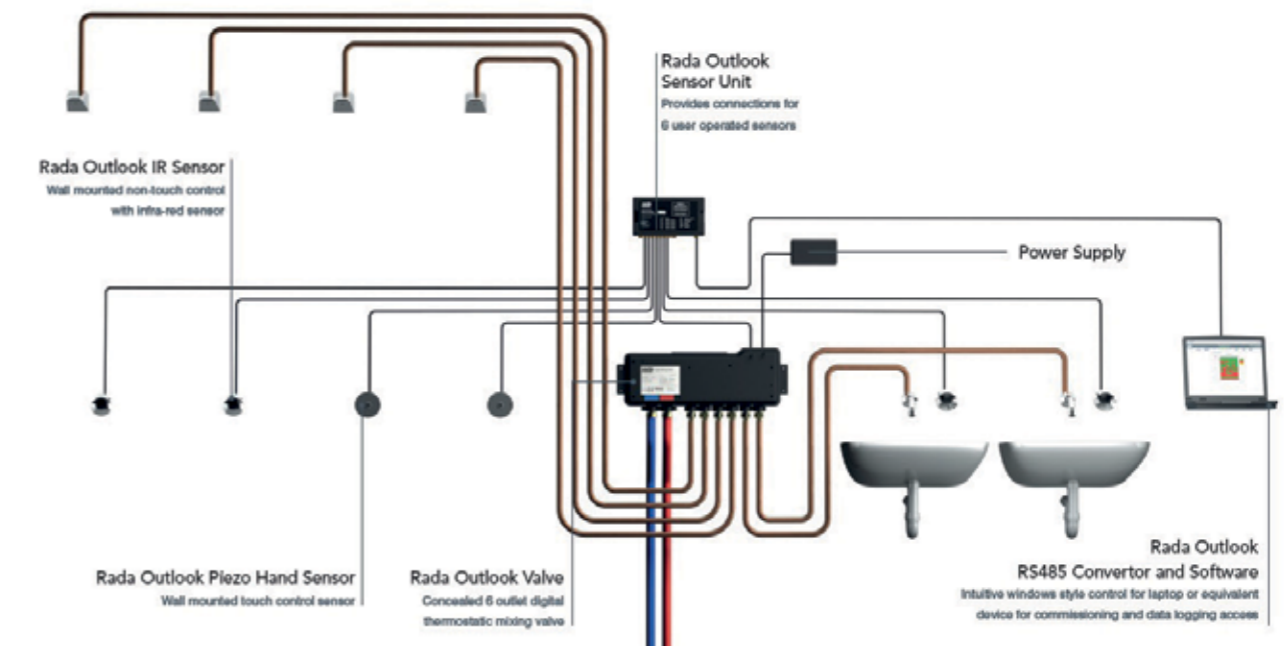


Illustration shows a basic 6 outlet set-up for Rada Outlook, consisting of three showers and three wash basins



Infrared sensor

- Non-touch flow control via concealed active infrared sensor
- Integrated tamper-proof fixings



Touch sensor

- One-touch Rada Piezo sensor



Panel mounted spout with infrared sensor

- Non-touch flow control for wash basins
- Integrated infrared sensor means no wall-mounted sensor control is required
- Available in 150mm, 190mm and 225mm lengths



Fully programmable system

- The Rada Outlook Windows-based software tool allows simple, speedy programming of the system via your PC or laptop, or integrate with your Building Management System
- Duty flush duration can be from 1 to 59 minutes, with intervals from 1 hour to 40 days
- Temperatures of the supervised thermal disinfection can be programmed from 60-80°C with cycle times up to 59 minutes, in line with L8 anti-bacterial safeguards
- Water temperatures can be programmed to between 30 and 50°C plus full cold across all outlets

Linked systems provide building-wide washroom management

With the capacity to link up to 31 Rada Outlook units using a Modbus protocol or BMS interface, a true building-wide washroom management system can be very simply created.

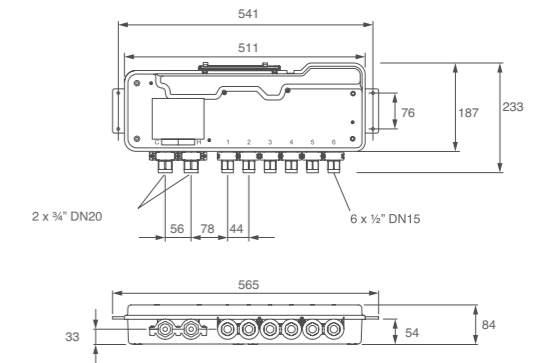
Networking washrooms across a building provides a detailed overview of water usage and other key data by washroom, by floor and throughout the property.

- Determine optimum settings for different types of washroom, such as male and female facilities, across the building
- View data from multiple locations
- Adjust duty flush, flow times and temperature settings for each washroom on site from a single control point
- Manage fans, lighting, PIR sensors and other auxiliary functions
- View and collate records for L8 compliance for multiple washrooms

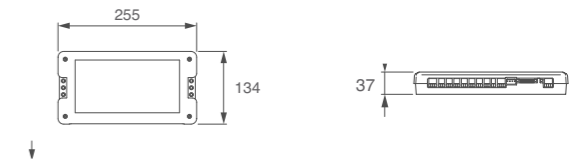
Outlook at a glance

- The cost-effective and compliant washroom water management system you can tailor to your needs
- Pre-programmable automatic duty flushing intervals
- Configure up to six showers or wash basins in any combination
- Integrates smoothly with auxiliary functions including fans, pumps, lighting systems and PIR occupancy sensors
- Monitor and download programmed duty flush and supervised thermal disinfection data, making compliance reporting very straightforward
- Control the system with an easy to use Windows-based PC or laptop interface, or integrate into BMS
- Digital Intelligence unit provides the nerve centre, linking components and providing optimum safety, hygiene and control
- Saves time and ensures efficient use of water and energy
- Systems can be linked to provide integrated monitoring and control throughout a building

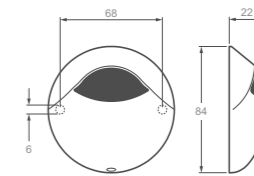
Digital mixing valve dimensions (mm)



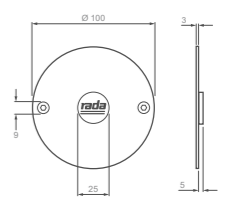
Sensor box (mm)



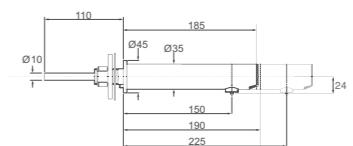
Infra red sensor (mm)



Touch sensor (mm)



Panel mounted spout with infra red sensor 150, 190, 225 (mm)



Product information

| Code | Description | Web link |
|------------|---|--|
| 1.1621.099 | Rada Outlook (UK) - Digital Mixing Valve and Sensor Box | www.radacontrols.com/outlook |
| 1.1621.112 | Rada Outlook IR Sensor (UK) | www.radacontrols.com/outir |
| 1.1621.085 | Rada Outlook Piezo Hand Sensor (UK) | www.radacontrols.com/outpz |
| 1.1621.136 | Rada Panel IR Mounted Spout (UK) 150mm | www.radacontrols.com/outirs150 |
| 1.1621.132 | Rada Panel IR Mounted Spout (UK) 190mm | www.radacontrols.com/outirs190 |
| 1.1621.137 | Rada Panel IR Mounted Spout (UK) 225mm | www.radacontrols.com/outirs225 |
| 1.1621.117 | RS485 Converter and Software (UK) | www.radacontrols.com/outscan |
| 1.1621.116 | Rada Outlook RS485 Socket (UK) | www.radacontrols.com/outssoc |
| 1.1621.115 | Rada Outlook 2-1 Adaptor Manifold (UK) | www.radacontrols.com/outrsby |



The experts in commercial showering and washroom controls

Since the 1930's, Rada has pioneered washroom and water flow control solutions in the UK. As part of Kohler Co., we continue to develop intelligent controls using the latest digital technology. By making use of innovations such as non-touch controls, automatic duty flushing, thermal disinfection and product usage data logging to aid compliance reporting, we can ensure the highest standards of washroom hygiene.

Contact us

Rada

Kohler Mira Ltd
Cromwell Road
Cheltenham
Gloucestershire
GL52 5EP

T 0844 571 1777

E rada_technical@mirashowers.com

www.radacontrols.com